

HPLC Application

ID No.: 16731

Fluoxetine on Lux 3 um Cellulose-1

Column: Lux[®] 3 μ m Cellulose-1, LC Column 250 x 4.6 mm, Ea

Dimensions: 250 x 4.6 mm ID

Order No: 00G-4458-E0

Elution Type: Isocratic

Eluent A: 0.1% DEA in Hexane

Eluent B: 0.1% DEA in Isopropanol

Gradient Profile:	Step No.	Time (min)	Pct A	Pct B
	1	0	95	5

Flow Rate: 1 mL/min

Col. Temp.: 25 °C

Detection: UV-Vis Abs.-Diode Array (PDA) @ 230 nm (ambient)

Detector Info: $\alpha=1.12$ and $R_s=2.07$

Analyst Note: SecurityGuard[™] Guard Cartridge System extends column lifetime.

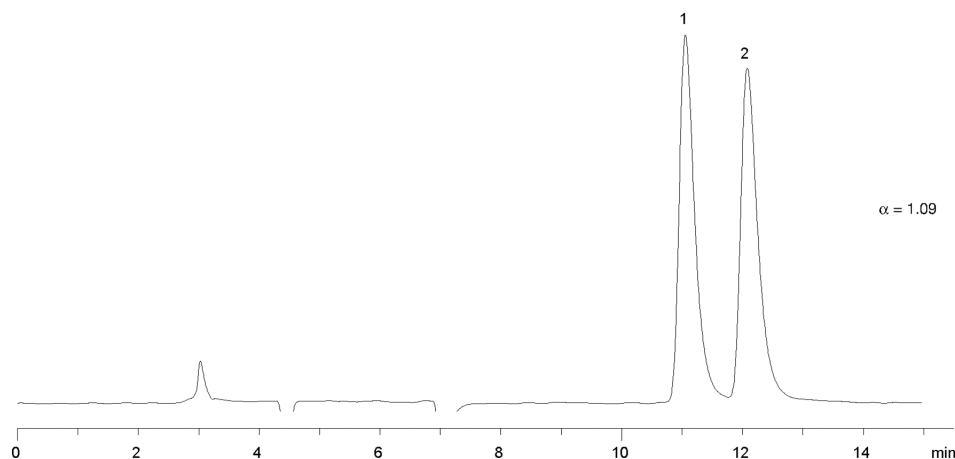
- SecurityGuard Cartridges, Lux Cellulose-1, 4 x 3.0mm, 10/Pk Part No.: AJ0-8403

- Holder Part No.: KJ0-4282

16731



Products used in this application:



ANALYTES:

- 1 Fluoxetine
- 2 Fluoxetine

