

Chlorinated Pesticides (EPA 508) Mix # 2 on ZB-MR1

Column: Zebron[™] ZB-MultiResidue[™]-1, GC Cap. Column 30 m x 0.25 mm x 0.25 μm, Ea

Phase: Proprietary Pesticides Phase

Dimensions: 30 meters x 0.25 mm x 0.25 μm

Order No: 7HG-G016-11

Oven Profile: 40 °C for 1 min to 100 °C @ 15 °C/min to 225 °C @ 5 °C/min to 320 °C @ 15 °C/min for 5 min

Carrier Gas: Constant Flow Helium, 0.7 mL/min

Injection: On-Column :1 0.5 μL @ 43°C

Detection: Mass Selective (MSD) (335°C)

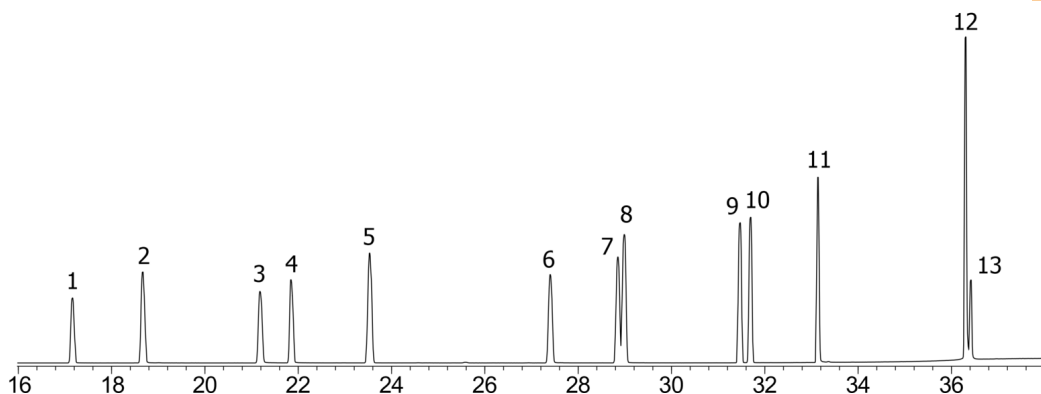
Analyst Note: Analytes 10 ppm in Acetone



Products used in this application:



17545



Chlorinated Pesticides (EPA 508) Mix # 2 on ZB-MR1

ANALYTES:

- 1 Etridiazole
- 2 Chloroneb
- 3 Propachlor
- 4 Trifluralin
- 5 Hexachlorobenzene
- 6 Chlorothalonil
- 7 Chlorpyrifos
- 8 Dacthal (DCPA)
- 9 gamma-Chlordane
- 10 alpha-Chlordane
- 11 Chlorobenzilate
- 12 Permethrin (isomer)
- 13 Permethrin (isomer)

