

Methylated Chlorinated Acids (EPA 515.2) Mix # 1 on ZB-MR1

Column: Zebron™ ZB-MultiResidue™-1, GC Cap. Column 30 m x 0.25 mm x 0.25 µm, Ea

Phase: Proprietary Pesticides Phase

Dimensions: 30 meters x 0.25 mm x 0.25 µm

Order No: 7HG-G016-11

Oven Profile: 40 °C for 1 min to 100 °C @ 15 °C/min to 225 °C @ 5 °C/min to 320 °C @ 15 °C/min for 5 min

Carrier Gas: Constant Flow Helium, 0.7 mL/min

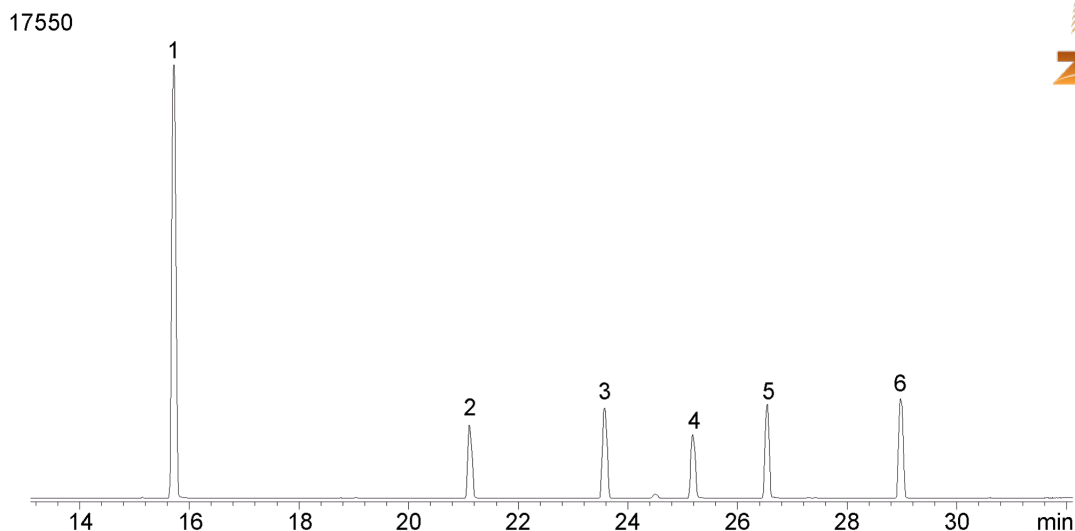
Injection: On-Column :1 0.5 µL @ 43°C

Detection: Mass Selective (MSD) (335°C)

Analyst Note: Analytes 10 ppm in Acetone



Products used in this application:



ANALYTES:

- 1 Methyl-3,5-dichlorobenzoate
- 2 Dichlorprop methyl ester
- 3 Pentachloroanisole
- 4 2,4,5-T methyl ester
- 5 Dinoseb methyl ester
- 6 Dacthal (DCPA)

