

GC Application

ID No.: 17790

Methadone by MSD on a ZB-5MSi

Column: Zebron[™] ZB-5MSi, GC Cap. Column 10 m x 0.18 mm x 0.18 μ m, Ea

Phase: 5% Phenyl 95% Dimethylpolysiloxane

Dimensions: 10 meters x 0.18 mm x 0.18 μ m

Order No: 7CD-G018-08

Oven Profile: 200 °C to 300 °C @ 20 °C/min

Carrier Gas: Constant Flow Helium, 0.7 mL/min

Injection: Split 10:1 1 μ L @ 280°C

Detection: Mass Selective (MSD) (320°C)

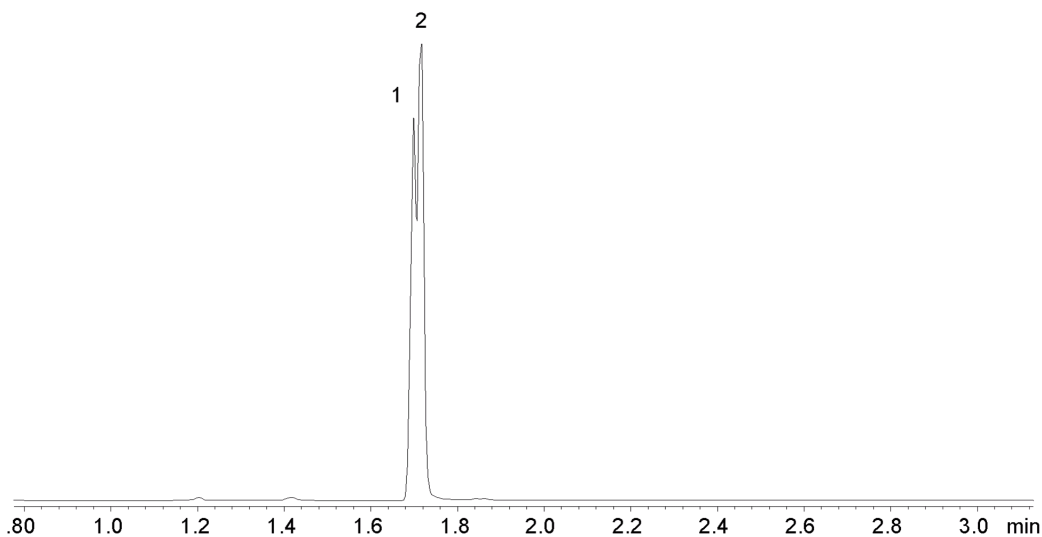
Analyst Note: Analytes are 24ppm
Sim ions:
(Quant ion*) D9-Methadone (*78,303): Methadone (*72,294,223)



Products used in this application:



1779



ANALYTES:

- 1 Methadone-d9
- 2 Methadone