

Ambucetamide on Lux 5 μ Cellulose-2 in NP 60%IPA

Column: Lux[®] 5 μ m Cellulose-2, LC Column 250 x 4.6 mm, Ea

Dimensions: 250 x 4.6 mm ID

Order No: 00G-4457-E0

Elution Type: Isocratic

Eluent A: 0.1 % DEA in Hexane

Eluent B: 0.1% DEA in IPA

Gradient Profile:	Step No.	Time (min)	Pct A	Pct B
	1	10	60	40

Flow Rate: 1 mL/min

Col. Temp.: ambient

Detection: UV-Vis Abs.-Variable Wave.(UV) @ 220 nm (ambient)

Analyst Note: SecurityGuard[™] Guard Cartridge System extends column lifetime.

- SecurityGuard Cartridges, Lux Cellulose-2, 4 x 3.0mm, 10/Pk Part No.: AJ0-8366

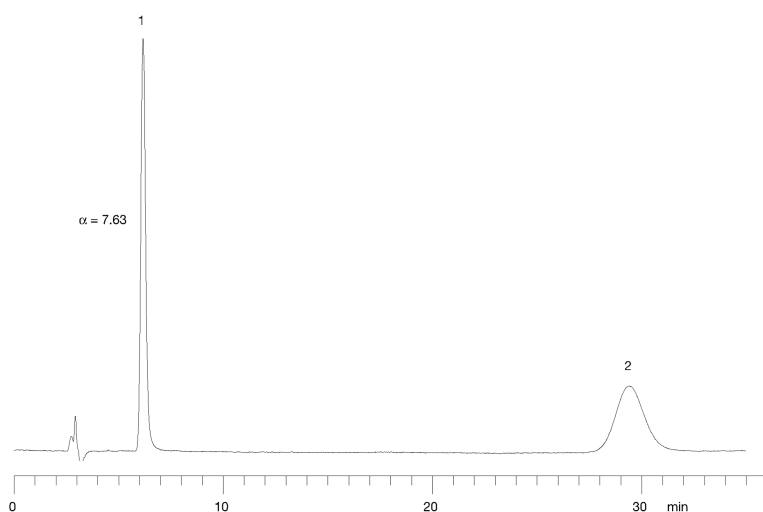
- Holder Part No.: KJ0-4282



Products used in this application:



17853



ANALYTES:

- 1** Ambucetamide
Retention Time: 6.2 min
- 2** Ambucetamide
Retention Time: 29.4 min