

Carboxy-THC by MSD on ZB-5MSi

Column: Zebron[™] ZB-5MSi, GC Cap. Column 15 m x 0.25 mm x 0.25 µm, Ea

Phase: 5% Phenyl 95% Dimethylpolysiloxane

Dimensions: 15 meters x 0.25 mm x 0.25 µm

Order No: 7EG-G018-11

Oven Profile: 150 °C to 320 °C @ 25 °C/min

Carrier Gas: Constant Flow Helium, 1.5 mL/min

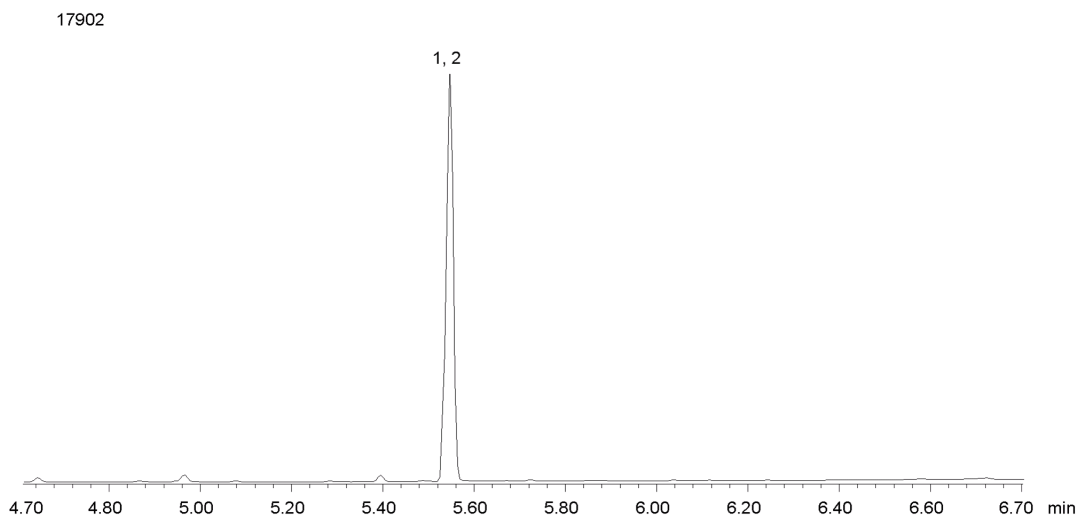
Injection: Split 10:1 1 µL @ 260°C

Detection: Mass Selective (MSD) (320°C)

Analyst Note: Analytes are 1.2ppm derivatized with BSTFA
Sim ions:
(Quant ion*) D3-Carboxy-thc (*374,476,477): Carboxy-thc (*371,473,474)



Products used in this application:



ANALYTES:

- 1 Carboxy-THC-d3
- 2 Carboxy-THC

