

HPLC Application

ID No.: 17970

Plasma Metanephrines by LC/MS/MS on Luna HILIC following SPE with Strata-X-CW

Column: Luna® 3 µm HILIC 200 Å, LC Column 50 x 2 mm, Ea

Dimensions: 50 x 2 mm ID

Order No: 00B-4449-B0

Elution Type: Gradient

Eluent A: ACN/100mM Ammonium Formate, pH 3.2 (95:5)

Eluent B: ACN/Water/100mM Ammonium Formate, pH 3.2 (50:45:5)

Gradient Profile:	Step No.	Time (min)	Pct A	Pct B
	1	0	100	0
	2	2.51	0	100
	3	3.01	100	0
	4	6	100	0

Flow Rate: 0.4 mL/min

Col. Temp.: ambient

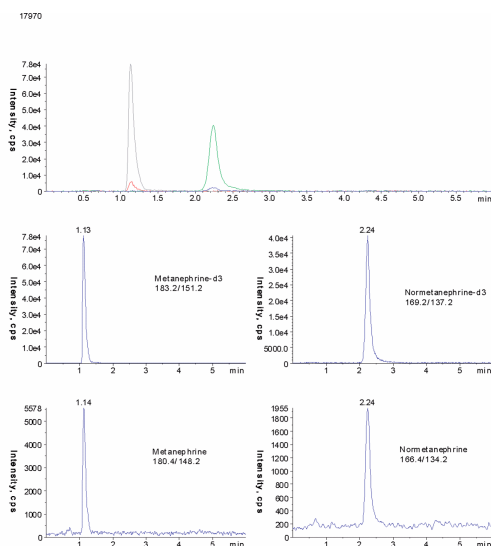
Detection: Mass Spectrometer (MS) @ amu (ambient)

Detector Info:	Analyte	MRM Pair
		(Q1/Q3)
	MN	180.4/148.2
	MN-D3	183.4/151.2
	NMN	166.4/134.2
	NMN-D3	169.4/137.2

- Analyst Note:** SecurityGuard™ Guard Cartridge System extends column lifetime.
- SecurityGuard Cartridges, HILIC 4 x 2.0mm, 10/Pk Part No.: AJ0-8328
 - Holder Part No.: KJ0-4282



Products used in this application:



Plasma Metanephrines by LC/MS/MS on Luna HILIC following SPE with Strata-X-CW

ANALYTES:

- 1 Metanephrine (MN)
- 2 Metanephrine-d3 (MN-d3)
- 3 Normetanephrine (NMN)
- 4 Normetanephrine-d3 (NMN-d3)



Sample Preparation Details

for HPLC Application ID No.: 17970

Plasma Metanephrines by LC/MS/MS on Luna HILIC following SPE with Strata-X-CW

PRODUCT DESCRIPTION:

Strata™-X-CW 33 µm Polymeric Weak Cation, 30 mg / well, 96-Well Plates , 2/Pk

Order No.: 8E-S035-TGB

SOLID PHASE EXTRACTION (SPE) PROCEDURE:

Note: The solvent volumes shown below are for a 30 mg bed mass.

The solvent volumes will need to be adjusted for a smaller or larger bed mass.

Condition:

Load:

Wash:

Dry:

2 min at 10" Hg

Elute:

Final Prep and Analysis:

Elution solvent must be freshly prepared

Inject: 30 µL on HPLC Mass Spectrometer (MS) @ amu (ambient)

ANALYTES:	Spiked Conc. (ng/mL)	Log P	pKa	% Rec	%RSC (n=0)
1 Metanephrine	1.5				
2 Metanephrine-d3	20				
3 Normetanephrine	1.5				
4 Normetanephrine-d3	20				

Note: This method is designed as a convenient starting point for further investigation and can be tailored to meet your extraction goals. Call your local Phenomenex Representative for assistance in method development and optimization techniques.

©2019 Phenomenex Inc. All rights reserved.

For more information contact your Phenomenex Representative at info@phenomenex.com



Phenomenex products are available worldwide.

www.phenomenex.com

info@phenomenex.com