

## Expanded amphetamines and interferences including TFMPP by MSD on a ZB-Drug1

**Column:** Zebtron™ ZB-Drug-1, GC Cap. Column 10 m x 0.18 mm x 0.18 μm, Ea

**Phase:** Proprietary Drug Phase

**Dimensions:** 10 meters x 0.18 mm x 0.18 μm

**Order No:** 7CD-G023-08

**Oven Profile:** 70 °C to 120 °C @ 20 °C/min to 180 °C @ 5 °C/min to 300 °C @ 30 °C/min

**Carrier Gas:** Constant Flow Helium, 0.5 mL/min

**Injection:** Split 10:1 1 μL @ 260°C

**Detection:** Mass Selective (MSD) (320°C)

**Analyst Note:** Analytes are 20ppm derivatized with HFBA

Sim ions:

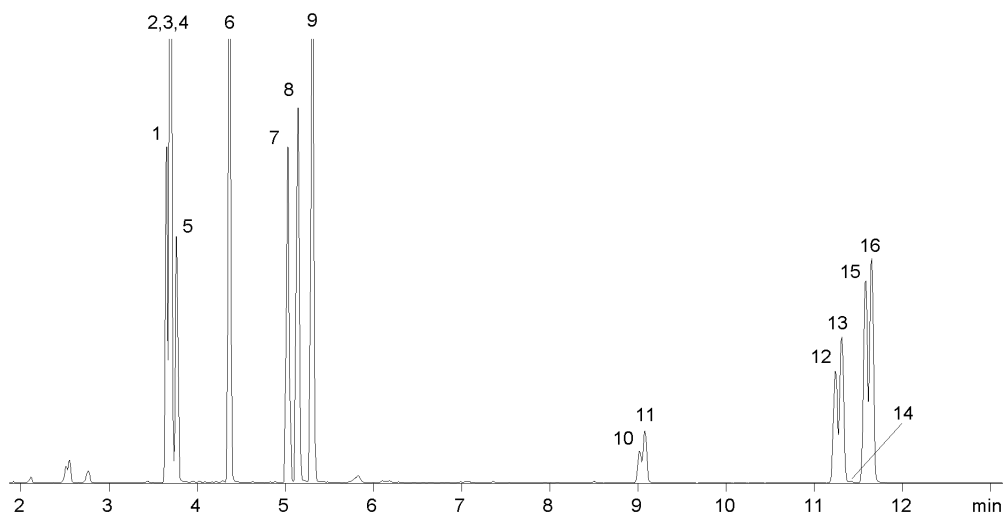
(Quant ion\*) D11-Amphetamine (\*244,128): Amphetamine (\*240,118,117): D14-Methamphetamine (\*261,213):  
Methamphetamine (\*254,210,118): D5-MDA (\*167,380,244): MDA (\*162,375,240): D5-MDMA (\*258,213,164):  
MDMA (\*254,210,389): D5-MDEA (\*273,241,408): MDEA (\*268,240,403)



Products used in this application:



18039



## Expanded amphetamines and interferences including TFMPP by MSD on a ZB-Drug1

### ANALYTES:

- 1 Norephedrine
- 2 Norpseudoephedrine
- 3 Phentermine
- 4 Amphetamine-d11
- 5 Amphetamine
- 6 Ephedrine
- 7 Methamphetamine-d14
- 8 Methamphetamine
- 9 Pseudoephedrine
- 10 MDA-d5
- 11 MDA
- 12 MDMA-d5
- 13 MDMA
- 14 TFMPP
- 15 MDEA-d5
- 16 MDEA

