

# GC Application

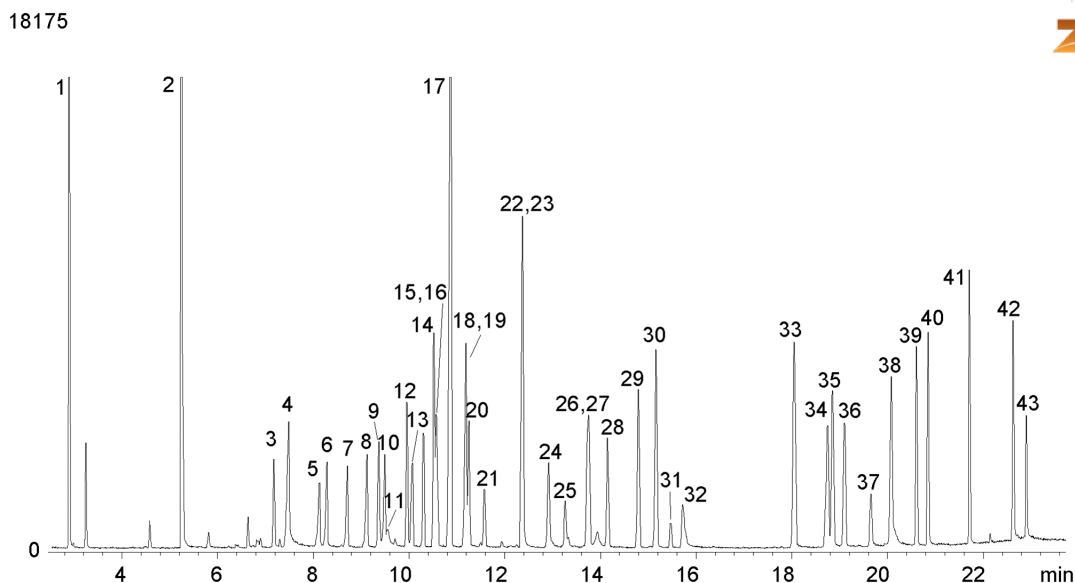
ID No.: 18175

## Drug screen by MSD on a ZB-Drug1

**Column:** Zebron<sup>™</sup> ZB-Drug-1, GC Cap. Column 10 m x 0.18 mm x 0.18  $\mu$ m, Ea  
**Phase:** Proprietary Drug Phase  
**Dimensions:** 10 meters x 0.18 mm x 0.18  $\mu$ m  
**Order No:** 7CD-G023-08  
**Oven Profile:** 50°C to 150°C @ 15°C/min to 240°C @ 7 °C/min to 320°C @ 25°C/min for 2 min  
**Carrier Gas:** Constant Flow Helium, 1 mL/min  
**Injection:** Split 10:1 1  $\mu$ L @ 260°C  
**Detection:** Mass Selective (MSD) (320°C)  
**Analyst Note:** Analytes are 25ppm in Methanol



Products used in this application:



## Drug screen by MSD on a ZB-Drug1

### ANALYTES:

- |                              |              |
|------------------------------|--------------|
| 1 Acetophenone               | 41 Ibogaine  |
| 2 Nicotine                   | 42 Triazolam |
| 3 Benzocaine                 | 43 LSD       |
| 4 Ibuprofen                  |              |
| 5 Allobarbitol               |              |
| 6 Aprobarbitol               |              |
| 7 Butalbital                 |              |
| 8 Amobarbital                |              |
| 9 Phenacetin                 |              |
| 10 Pentobarbital             |              |
| 11 Acetaminophen             |              |
| 12 Benzphetamine             |              |
| 13 Secobarbital              |              |
| 14 Phencyclidine             |              |
| 15 Meprobamate               |              |
| 16 Diphenhydramine           |              |
| 17 Lidocaine                 |              |
| 18 Hexobarbital              |              |
| 19 Doxylamine                |              |
| 20 Glutethimide              |              |
| 21 Caffeine                  |              |
| 22 Chlorpheniramine          |              |
| 23 Methapyrilene             |              |
| 24 Phenobarbital             |              |
| 25 Procaine                  |              |
| 26 Methadone                 |              |
| 27 Brompheniramine           |              |
| 28 Propoxyphene              |              |
| 29 Trimipramine              |              |
| 30 Chlorcyclizine            |              |
| 31 Cocaine                   |              |
| 32 Desipramine               |              |
| 33 Codeine                   |              |
| 34 Morphine                  |              |
| 35 Diazepam (Valium)         |              |
| 36 Hydrocodone               |              |
| 37 6-MAM                     |              |
| 38 Oxymorphone               |              |
| 39 Heroin (Diacetylmorphine) |              |
| 40 Fentanyl                  |              |

