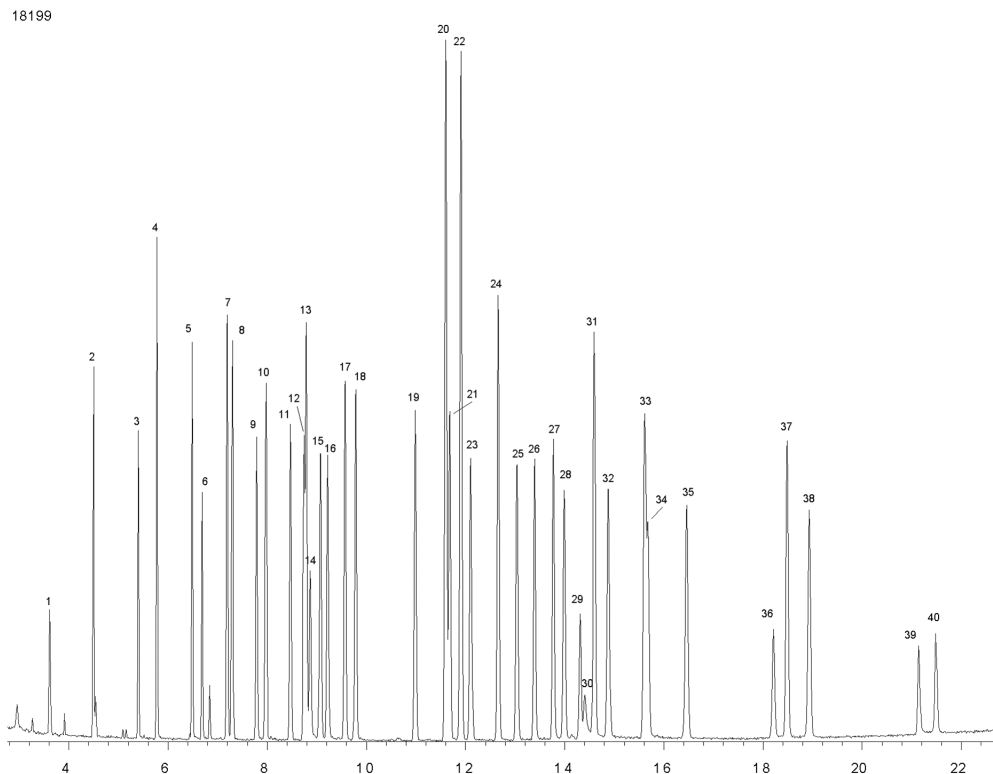


EPA Methods 508 and 8081A by MSD on ZB-35HT

Column: Zebtron™ ZB-35HT, GC Cap. Column 30 m x 0.25 mm x 0.25 μm, Ea
Phase: 35% Phenyl 65% Dimethylpolysiloxane
Dimensions: 30 meters x 0.25 mm x 0.25 μm
Order No: 7HG-G025-11
Oven Profile: 100 °C for 0.5 min to 210 °C @ 30 °C/min. for 0.5 min to 230 °C @ 10 °C/min for 2 min to 260 °C @ 5 °C/min for 2 min to 300 °C @ 6 °C/min
Carrier Gas: Constant Flow Helium, 0.5 mL/min
Injection: Split 10:1 1 μL @ 200°C
Detection: Mass Selective (MSD) (350°C)
Analyst Note: All analytes were 10 ppm in iso-octane



Products used in this application:



EPA Methods 508 and 8081A by MSD on ZB-35HT

ANALYTES:

- 1 DBCP
- 2 Hexachlorocyclopentadiene
- 3 Etridiazole
- 4 Chloroneb
- 5 Propachlor
- 6 Di-allate
- 7 Hexachlorobenzene
- 8 alpha-BHC
- 9 PCNB
- 10 gamma-BHC
- 11 b-BHC
- 12 Alachlor
- 13 Heptachlor
- 14 Dichlone
- 15 delta-BHC
- 16 Chlorothalonil
- 17 Aldrin
- 18 Dacthal (DCPA)
- 19 Heptachlor epoxide
- 20 trans-Chlordane (gamma)
- 21 trans-Nonachlor
- 22 cis-Chlordane (alpha)
- 23 Endosulfan I
- 24 4,4'-DDE
- 25 Dieldrin
- 26 Chloropropylate
- 27 Chlorobenzilate
- 28 Endrin
- 29 Nitrofen
- 30 Kepone
- 31 4,4'-DDD
- 32 Endosulfan II
- 33 4,4'-DDT
- 34 Endrin aldehyde
- 35 Endosulfan sulfate
- 36 Captafol
- 37 Methoxychlor
- 38 Endrin ketone
- 39 Permethrin
- 40 Permethrin (isomer)

