

Expanded healthcare opiates (propyl derivatives) from urine by Screen C on a ZB-Drug1

Column: Zebtron™ ZB-Drug-1, GC Cap. Column 10 m x 0.18 mm x 0.18 µm, Ea

Phase: Proprietary Drug Phase

Dimensions: 10 meters x 0.18 mm x 0.18 µm

Order No: 7CD-G023-08

Oven Profile: 150 °C to 320 °C @ 25 °C/min for 5 min

Carrier Gas: Constant Flow Helium, 0.7 mL/min

Injection: Split 10:1 1 µL @ 260°C

Detection: Mass Selective (MSD) (320°C)

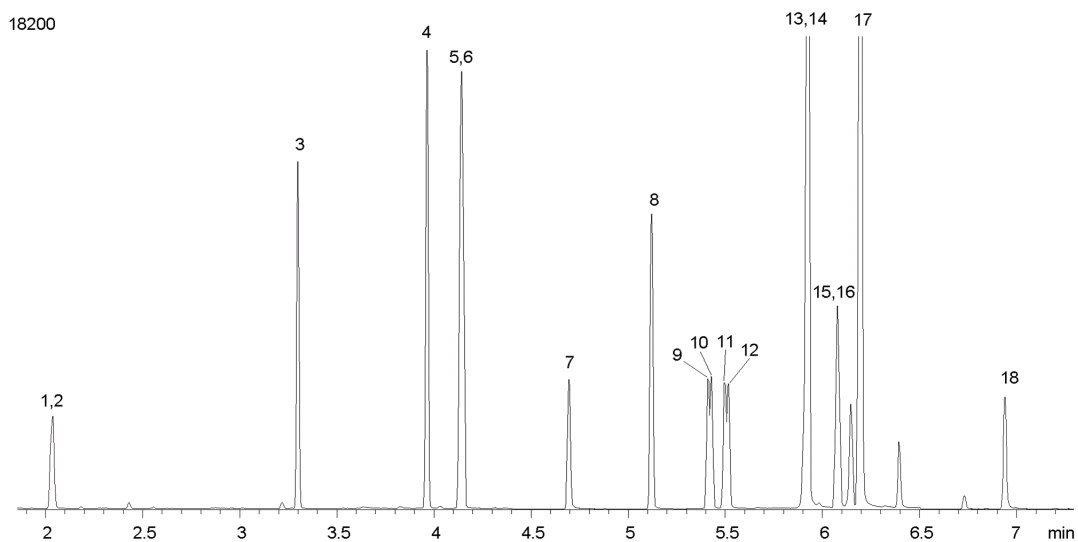
Analyst Note: Analytes are 12 µg/mL derivatized with propionic anhydride (Tramadols are 24µg/mL)

Sim ions:

(Quant ion*) D4-Meperidine (*251,222): Meperidine (*247,218,246): Tramadol (*58,188): O-Desmethyltramadol (*58,174): D4-Normeperidine (*191,236): Normeperidine (*187,232,289): N-Desmethyltramadol (*305,276,248): Hydrocodone (*299,242,214): D6-Codeine (*361,288,235): Codeine (*355,282,229):



Products used in this application:



Expanded healthcare opiates (propyl derivatives) from urine by Screen C on a ZB-Drug1

ANALYTES:

- 1 Meperidine-d4
- 2 Meperidine (Demerol)
- 3 Tramadol
- 4 O-Desmethyltramadol
- 5 Normeperidine-d4
- 6 Normeperidine
- 7 N-Desmethyltramadol
- 8 Hydrocodone
- 9 Codeine-d6
- 10 Codeine
- 11 Oxycodone-d6
- 12 Oxycodone
- 13 Hydromorphone-d6
- 14 Hydromorphone
- 15 Morphine-d3
- 16 Morphine
- 17 Oxymorphone
- 18 Norcodeine

