

## Trans-Stilbene Oxide on Lux 5u Cellulose-2 by SFC

**Column:** Lux® 5 µm Cellulose-2, LC Column 250 x 4.6 mm, Ea

**Dimensions:** 250 x 4.6 mm ID

**Order No:** 00G-4457-E0

**Elution Type:** Isocratic

**Eluent A:** 0.1% DEA+0.1% TFA in methanol

**Eluent B:** CO<sub>2</sub>

Gradient Profile:	Step No.	Time (min)	Pct A	Pct B
	1	0	25	75

**Flow Rate:** 2 mL/min

**Col. Temp.:** 40 °C

**Detection:** UV-Vis Abs.-Variable Wave.(UV) @ 220 nm (ambient)

**Analyst Note:** SecurityGuard™ Guard Cartridge System extends column lifetime.

- SecurityGuard Cartridges, Lux Cellulose-2, 4 x 3.0mm ID, 10/Pk Part No.: AJ0-8366

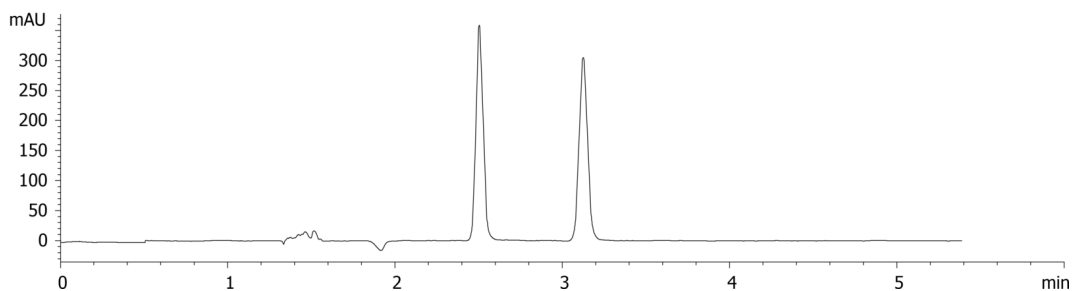
- Holder Part No.: KJ0-4282



Products used in this application:



18204



### ANALYTES:

1 trans-Stilbene oxide (TSO)

