

# HPLC Application

ID No.: 18243

## Tricyclic Antidepressants on Luna 5µm C18(2) 250 x 4.6mm ID on Agilent 1200 1 mL/min

**Column:** Luna® 5 µm C18(2) 100 Å, LC Column 250 x 4.6 mm, Ea

**Dimensions:** 250 x 4.6 mm ID

**Order No:** 00G-4252-E0

**Elution Type:** Isocratic

**Eluent A:** 20 mM Potassium Phosphate pH 7

**Eluent B:** 50:50 MeOH and ACN

| Gradient Profile: | Step No. | Time (min) | Pct A | Pct B |
|-------------------|----------|------------|-------|-------|
|                   | 1        | 0          | 48    | 52    |

**Flow Rate:** 1 mL/min

**Col. Temp.:** 40 °C

**Detection:** UV-Vis Abs.-Variable Wave.(UV) @ 254 nm (ambient)

**Analyst Note:** SecurityGuard™ Guard Cartridge System extends column lifetime.

- SecurityGuard Cartridges, C18 4 x 3.0mm, 10/Pk Part No.: AJ0-4287

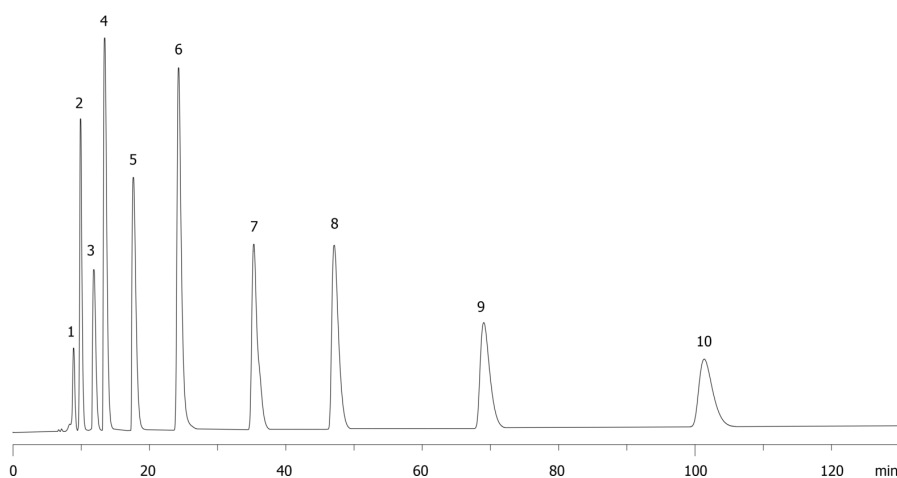
- Holder Part No.: KJ0-4282



Products used in this application:



18243



## Tricyclic Antidepressants on Luna 5 $\mu$ m C18(2) 250 x 4.6mm ID on Agilent 1200 1 mL/min

### ANALYTES:

- 1 Tianeptine
- 2 Desmethyldoxepin
- 3 Protriptyline
- 4 Desipramine
- 5 Imipramine
- 6 Amoxapine
- 7 Doxepin
- 8 Nortriptyline
- 9 Amitriptyline
- 10 Clomipramine

