

## Tricyclic Antidepressants on Kinetex 2.6µm C18 50 x 4.6 mm ID on Agilent 1100 (system optimization)

**Column:** Kinetex® 2.6 µm C18 100 Å, LC Column 50 x 4.6 mm, Ea

**Dimensions:** 50 x 4.6 mm ID

**Order No:** 00B-4462-E0

**Elution Type:** Isocratic

**Eluent A:** 20 mM Potassium Phosphate pH 7.0

**Eluent B:** 50:50 MeOH and ACN

Gradient Profile:	Step No.	Time (min)	Pct A	Pct B
	1	0	48	52

**Flow Rate:** 2.9 mL/min

**Col. Temp.:** 40 °C

**Detection:** UV-Vis Abs.-Variable Wave.(UV) @ 254 nm (ambient)

**Detector Info:** with 0.12mm ID red capillaries and needle seat, std flow cell, detector rate @ 0.1 s  
313 bar

**Analyst Note:** SecurityGuard™ ULTRA Guard Cartridge System extends column lifetime.

- SecurityGuard ULTRA Cartridges, UHPLC C18 for 4.6mm ID Columns, 3/Pk Part No.: AJ0-8768

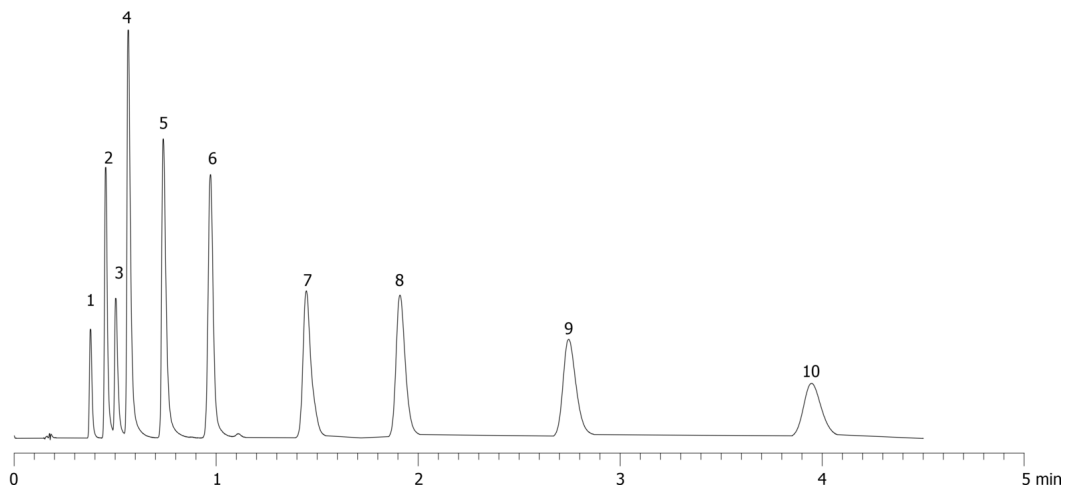
- Holder Part No.: AJ0-9000



Products used in this application:



18249



## Tricyclic Antidepressants on Kinetex 2.6 $\mu$ m C18 50 x 4.6 mm ID on Agilent 1100 (system optimization)

### ANALYTES:

- 1 Tianeptine
- 2 Desmethyldoxepin
- 3 Protriptyline
- 4 Desipramine
- 5 Imipramine
- 6 Amoxapine
- 7 Doxepin
- 8 Nortriptyline
- 9 Amitriptyline
- 10 Clomipramine

