

# HPLC Application

ID No.: 18283

## Preparative Scale Up of Trans-Stilbene Oxide on Lux 5 um Cellulose-2 250 x 4.6

**Column:** Lux<sup>®</sup> 5 µm Cellulose-2, LC Column 250 x 4.6 mm, Ea

**Dimensions:** 250 x 4.6 mm ID

**Order No:** 00G-4457-E0

**Elution Type:** Isocratic

**Eluent A:** IPA

**Eluent B:** Hexane

Gradient Profile:	Step No.	Time (min)	Pct A	Pct B
	1	0	10	90

**Flow Rate:** 0.5 mL/min

**Col. Temp.:** ambient

**Detection:** UV-Vis Abs.-Variable Wave.(UV) @ 220 nm (ambient)

**Detector Info:** Flow Rate and Injection Volume incorrect; FPO - Jason Lam

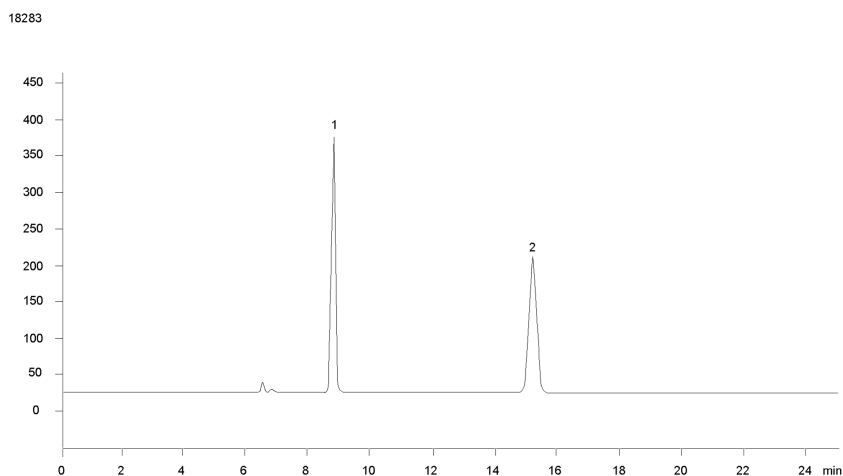
**Analyst Note:** SecurityGuard<sup>™</sup> Guard Cartridge System extends column lifetime.

- SecurityGuard Cartridges, Lux Cellulose-2, 4 x 3.0mm, 10/Pk Part No.: AJ0-8366

- Holder Part No.: KJ0-4282



Products used in this application:



### ANALYTES:

1 trans-Stilbene oxide (TSO)

2 trans-Stilbene oxide (TSO)

