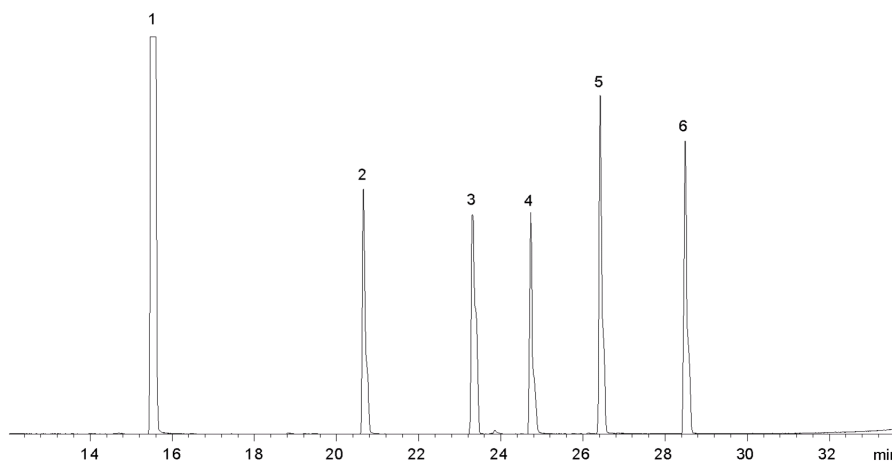


## Methylated Chlorinated Acids (EPA 515.2) Mix # 1 on ZB-XLB

**Column:** Zebron™ ZB-XLB, GC Cap. Column 30 m x 0.25 mm x 0.25 µm, Ea  
**Phase:** Proprietary XLB Phase  
**Dimensions:** 30 meters x 0.25 mm x 0.25 µm  
**Order No:** 7HG-G019-11  
**Oven Profile:** 40 °C for 1 min to 100 °C @ 15 °C/min to 225 °C @ 5 °C/min to 320 °C @ 15 °C/min for 5 min  
**Carrier Gas:** Constant Flow Helium, 0.8 mL/min  
**Injection:** On-Column :1 0.5 µL @ 43°C  
**Detection:** Mass Selective (MSD) (335°C)  
**Analyst Note:** Analytes 10 ppm in Acetone

18366



### ANALYTES:

- 1 Methyl-3,5-dichlorobenzoate
- 2 Dichlorprop methyl ester
- 3 Pentachloroanisole
- 4 2,4,5-T methyl ester
- 5 Dinoseb methyl ester
- 6 Dacthal (DCPA)



Products used in this application:

