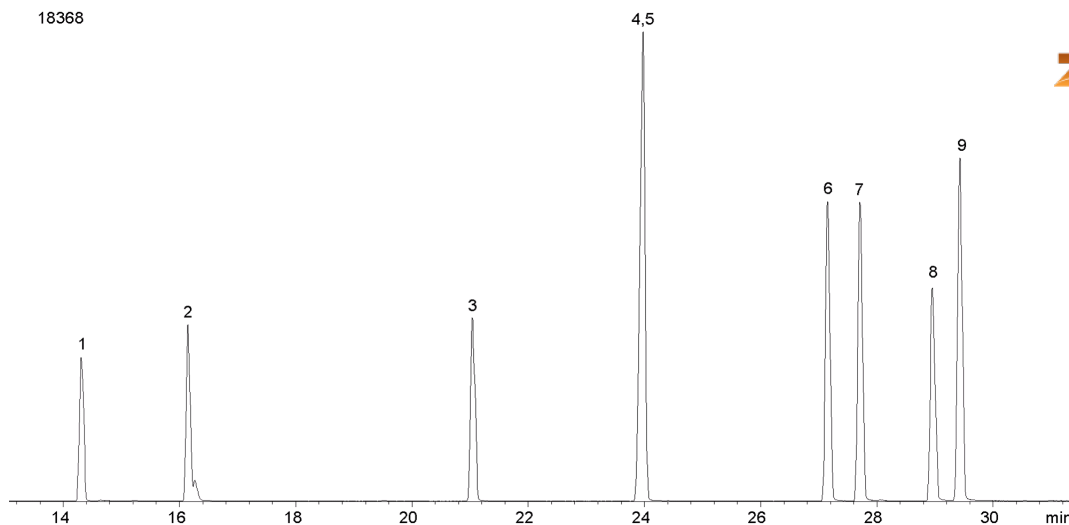


Nitrogen and Phosphorous Pesticides (EPA 507) Mix # 2 on ZB-XLB

Column: Zebtron™ ZB-XLB, GC Cap. Column 30 m x 0.25 mm x 0.25 µm, Ea
Phase: Proprietary XLB Phase
Dimensions: 30 meters x 0.25 mm x 0.25 µm
Order No: 7HG-G019-11
Oven Profile: 40 °C for 1 min to 100 °C @ 15 °C/min to 225 °C @ 5 °C/min to 320 °C @ 15 °C/min for 5 min
Carrier Gas: Constant Flow Helium, 0.8 mL/min
Injection: On-Column :1 0.5 µL @ 43°C
Detection: Mass Selective (MSD) (335°C)
Analyst Note: Analytes 10 ppm in Acetone



Products used in this application:



ANALYTES:

- 1 EPTC (Eptam)
- 2 Mevinphos (Phosdrin)
- 3 Ethoprop (Ethoprophos)
- 4 Atrazine
- 5 Propazine
- 6 Prometryn
- 7 Terbutryn (Terbutryn, aka: Prebane)
- 8 Triadimefon
- 9 Diphenamide

