

# HPLC Application

ID No.: 18466

## Biologically Active acids and Related compounds on Gemini 5u C18 150x4.6 Column

**Column:** Gemini<sup>®</sup> 5  $\mu$ m C18 110 Å, LC Column 150 x 4.6 mm, Ea

**Dimensions:** 150 x 4.6 mm ID

**Order No:** 00F-4435-E0

**Elution Type:** Gradient

**Eluent A:** 20 mM KH<sub>2</sub>PO<sub>4</sub>(pH 2.5)

**Eluent B:** Methanol

Gradient Profile:	Step No.	Time (min)	Pct A	Pct B
	1	0	80	20
	2	2	80	20
	3	5	20	80
	4	9.5	20	80

**Flow Rate:** 1 mL/min

**Col. Temp.:** ambient

**Detection:** UV-Vis Abs.-Variable Wave.(UV) @ 230 nm (ambient)

**Analyst Note:** SecurityGuard<sup>™</sup> Guard Cartridge System extends column lifetime.

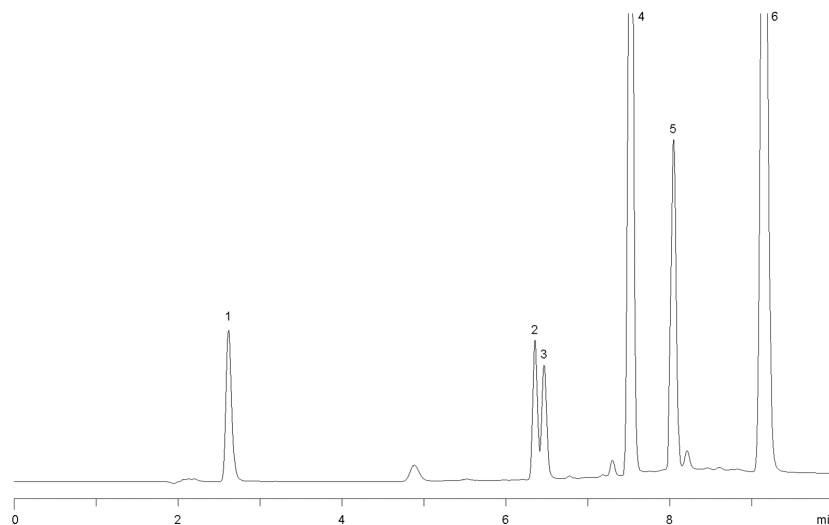
- SecurityGuard Cartridges, Gemini C18 4 x 3.0mm ID, 10/Pk Part No.: AJ0-7597

- Holder Part No.: KJ0-4282

18466



Products used in this application:



### ANALYTES:

**1** 3,4-Dihydroxy mandelic acid

Retention Time: 2.617 min

**2** Mandelic acid (enantiomers)

Retention Time: 6.366 min

**3** Mandelic acid (enantiomers)

Retention Time: 6.467 min

**4** Indole-3-carboxylic acid

Retention Time: 7.52 min

**5** Nalidixic acid

Retention Time: 8 min

**6** Naproxen

Retention Time: 9.146 min

