

GC Application

ID No.: 18481

Carboxy-THC from urine by Strata-XC on a ZB-Drug1

Column: Zebtron™ ZB-Drug-1, GC Cap. Column 10 m x 0.18 mm x 0.18 μm, Ea

Phase: Proprietary Drug Phase

Dimensions: 10 meters x 0.18 mm x 0.18 μm

Order No: 7CD-G023-08

Oven Profile: 220 °C to 320 °C @ 20 °C/min for 5 min

Carrier Gas: Constant Flow Helium, 0.7 mL/min

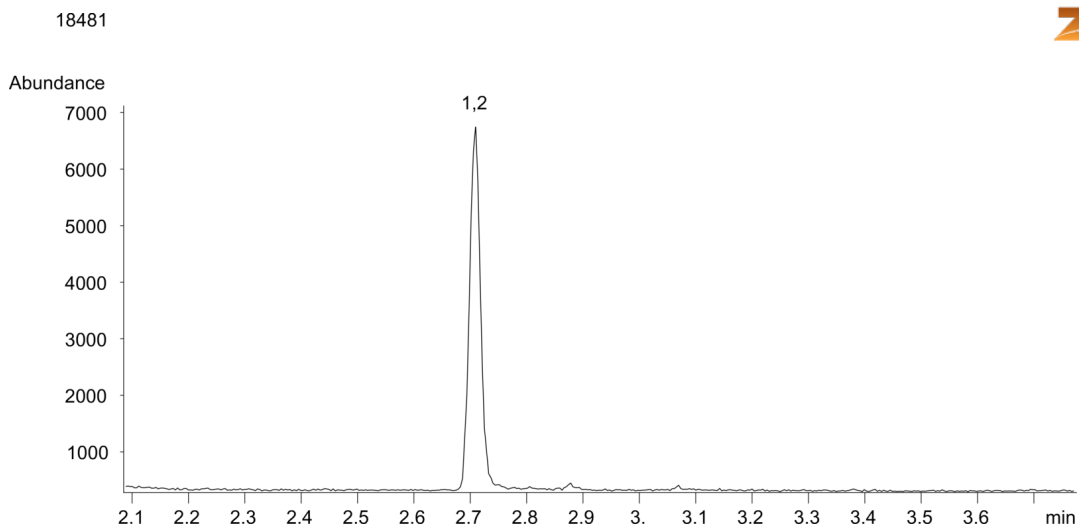
Injection: Split 10:1 1 μL @ 260°C

Detection: Mass Selective (MSD) (320°C)

Analyst Note: Analytes are 15ng/mL in urine derivatized with BSTFA
Sim ions:
(Quant ion*) D3-Carboxy-thc (*374,476,477): Carboxy-thc (*371,473,474)



Products used in this application:



ANALYTES:

- 1 Carboxy-THC-d3
- 2 Carboxy-THC



Sample Preparation Details

for GC Application ID No.: 18481

Carboxy-THC from urine by Strata-XC on a ZB-Drug1

PRODUCT DESCRIPTION:

Strata™-X-C 33 µm Polymeric Strong Cation, 30 mg / 3 mL, Tubes , 50/Pk

Order No.: 8B-S029-TBJ

SOLID PHASE EXTRACTION (SPE) PROCEDURE:

Note: The solvent volumes shown below are for a 30 mg bed mass.

The solvent volumes will need to be adjusted for a smaller or larger bed mass.

Condition:

Load:

To 1mL of urine add 100µL of 10 N NaOH, hydrolyze at 60°C for 20 min.

Cool sample and adjust pH to 3.0 acetic acid.

Wash:

Dry:

5 minutes at > 10 inch Hg

Elute:

Final Prep and Analysis:

After drying the cartridge (before elution step) add 200 µL hexane and aspirate to remove any residual moisture.

Inject: 1 µL on HPLC Mass Selective (MSD) @ amu (320°C)

ANALYTES:	Spiked Conc. (ng/mL)	Log P	pKa	% Rec	%RSC (n=0)
1 Carboxy-THC-d3	0				
2 Carboxy-THC	0				

Note: This method is designed as a convenient starting point for further investigation and can be tailored to meet your extraction goals. Call your local Phenomenex Representative for assistance in method development and optimization techniques.

©2020 Phenomenex Inc. All rights reserved.

For more information contact your Phenomenex Representative at info@phenomenex.com



Phenomenex products are available worldwide.

www.phenomenex.com

info@phenomenex.com