

6-MAM from urine by Strata-XC on a ZB-Drug1

Column: Zebtron™ ZB-Drug-1, GC Cap. Column 10 m x 0.18 mm x 0.18 µm, Ea

Phase: Proprietary Drug Phase

Dimensions: 10 meters x 0.18 mm x 0.18 µm

Order No: 7CD-G023-08

Oven Profile: 150 °C to 300 °C @ 30 °C/min

Carrier Gas: Constant Flow Helium, 0.3 mL/min

Injection: Split 10:1 1 µL @ 260°C

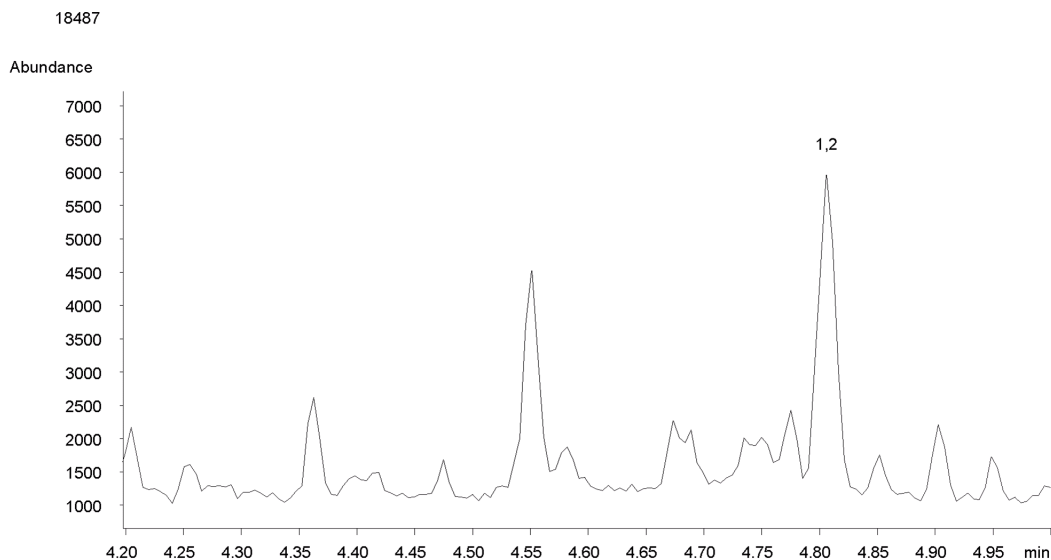
Detection: Mass Selective (MSD) (320°C)

Analyst Note: Analytes are 10ng/mL in urine derivatized with BSTFA
Sim ions:
(Quant ion*) D3-6-MAM (*402,403): 6-MAM (*399,400,340)

Note: Method kept this way for continuity, the sample can be cleaned further by using different wash steps. For more information contact a Phenomenex technical consultant.



Products used in this application:



ANALYTES:

- 1 6-MAM-d3
- 2 6-MAM



Sample Preparation Details

for GC Application ID No.: 18487

6-MAM from urine by Strata-XC on a ZB-Drug1

PRODUCT DESCRIPTION:

Strata™-X-C 33 µm Polymeric Strong Cation, 30 mg / 1 mL, Tubes , 100/Pk

Order No.: 8B-S029-TAK

SOLID PHASE EXTRACTION (SPE) PROCEDURE:

Note: The solvent volumes shown below are for a 30 mg bed mass.

The solvent volumes will need to be adjusted for a smaller or larger bed mass.

Condition:

Load:

To 1mL of urine add 1mL of 100mM phosphate buffer (pH 6.0), adjust pH to 6.0 using phosphoric acid

Wash:

Dry:

10minutes at > 10 inch Hg

Elute:

Final Prep and Analysis:

Inject: 1 µL on HPLC Mass Selective (MSD) @ amu (320°C)

ANALYTES:	Spiked Conc. (ng/mL)	Log P	pKa	% Rec	%RSC (n=0)
1 6-MAM-d3	0				
2 6-MAM	0				

Note: This method is designed as a convenient starting point for further investigation and can be tailored to meet your extraction goals. Call your local Phenomenex Representative for assistance in method development and optimization techniques.

©2019 Phenomenex Inc. All rights reserved.

For more information contact your Phenomenex Representative at info@phenomenex.com



Phenomenex products are available worldwide.

www.phenomenex.com

info@phenomenex.com