

## Catecholamines on Kinetex 2.6µm C18 150 x 4.6mm ID

**Column:** Kinetex® 2.6 µm C18 100 Å, LC Column 150 x 4.6 mm, Ea

**Dimensions:** 150 x 4.6 mm ID

**Order No:** 00F-4462-E0

**Elution Type:** Isocratic

**Eluent A:** 20mM Phosphate buffer, pH=2.5

**Eluent B:** MeOH

Gradient Profile:	Step No.	Time (min)	Pct A	Pct B
	1	10	97	3

**Flow Rate:** 1.2 mL/min

**Col. Temp.:** ambient

**Detection:** UV-Vis Abs.-Variable Wave.(UV) @ 210 nm (ambient)

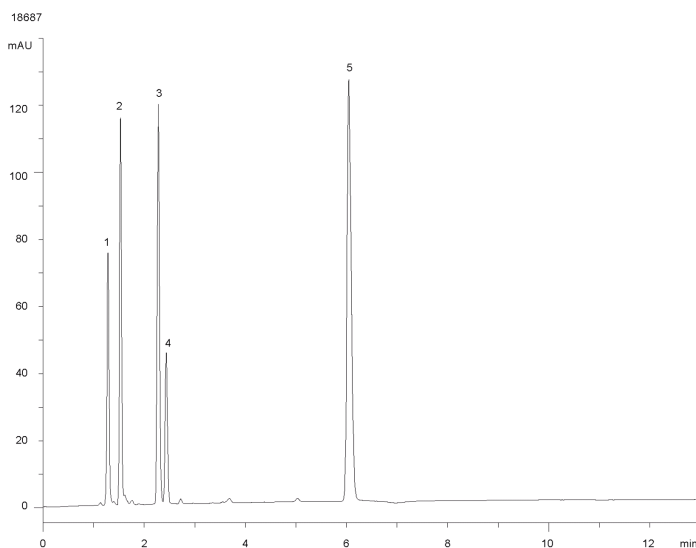
**Analyst Note:** SecurityGuard™ ULTRA Guard Cartridge System extends column lifetime.

- SecurityGuard ULTRA Cartridges, UHPLC C18 for 4.6mm ID Columns, 3/Pk Part No.: AJ0-8768

- Holder Part No.: AJ0-9000



Products used in this application:



### ANALYTES:

**1** Norepinephrine

Retention Time: 1.28 min

**2** Epinephrine

Retention Time: 1.53 min

**3** Dopamine

Retention Time: 2.28 min

**4** L-DOPA [3-(3,4-dihydroxyphenyl)-alanine]

Retention Time: 2.43 min

**5** Serotonin

Retention Time: 6.04 min

