

GC Application

ID No.: 18788

EPA Method 8151 - Chlorinated Herbicides on a ZB-35-HT (Dual column)

Column: Zebtron™ ZB-35HT, GC Cap. Column 30 m x 0.25 mm x 0.25 μm, Ea
Phase: 35% Phenyl 65% Dimethylpolysiloxane
Dimensions: 30 meters x 0.25 mm x 0.25 μm
Order No: 7HG-G025-11
Oven Profile: 50 °C for 0.5 min to 100 °C @ 25 °C/min to 320 °C @ 12 °C/min for 2 min

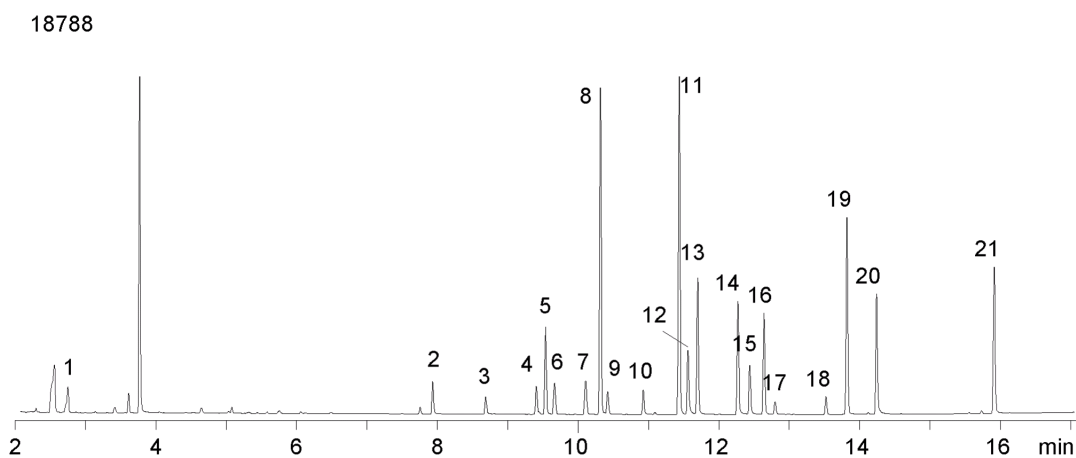
Carrier Gas: Constant Flow Helium, 2.4 mL/min
Injection: Splitless 0:1 1 μL @ 250°C
Detection: Electron Capture (ECD) (300°C)

Analyst Note: Analytes are 50ppb in isooctane.

Dual column with ZB-XLB-HT



Products used in this application:



EPA Method 8151 - Chlorinated Herbicides on a ZB-35-HT(Dual column)

ANALYTES:

- 1 Dalapon
- 2 3,5-Dichlorobenzoic acid
- 3 4-Nitrophenol
- 4 DCAA (internal standard)
- 5 Dicamba
- 6 MCPP
- 7 MCPA
- 8 DBOB (internal standard)
- 9 Dichlorprop
- 10 2,4-D
- 11 Pentachlorophenol
- 12 contaminant
- 13 Silvex
- 14 Chloramben
- 15 2,4,5-T
- 16 Dinoseb
- 17 2,4-DB
- 18 Bentazon
- 19 Picloram
- 20 Dacthal (DCPA)
- 21 Acifluorfen

