

HPLC Application

ID No.: 18863

Trans-Stilbene Oxide on Lux 5 µm Cellulose-1 by Chiral SFC

Column: Lux® 5 µm Cellulose-1, LC Column 250 x 4.6 mm, Ea

Dimensions: 250 x 4.6 mm ID

Order No: 00G-4459-E0

Elution Type: Isocratic

Eluent A: Methanol with 0.1% DEA

Eluent B: CO₂

Gradient Profile:	Step No.	Time (min)	Pct A	Pct B
	1	0	25	75

Flow Rate: 2.5 mL/min

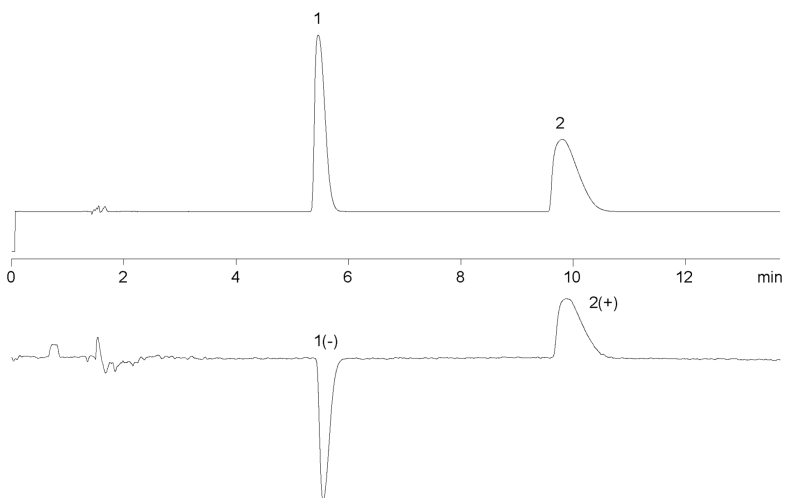
Col. Temp.: 35 °C

Detection: Laser Polarimeter @ D (ambient)

Analyst Note: Application using PDR-Chiral Advanced Laser Polarimeter courtesy of PDR-Chiral, Inc.
18863



Products used in this application:



ANALYTES:

- 1 trans-Stilbene oxide (TSO)
- 2 trans-Stilbene oxide (TSO)