

# HPLC Application

ID No.: 18866

## Terfenadine on Lux 5 µm Cellulose-1 by Chiral SFC (loading and scale up)

**Column:** Lux® 5 µm Cellulose-1, LC Column 250 x 4.6 mm, Ea

**Dimensions:** 250 x 4.6 mm ID

**Order No:** 00G-4459-E0

**Elution Type:** Isocratic

**Eluent A:** Methanol with 0.1% DEA

**Eluent B:** CO<sub>2</sub>

Gradient	Step No.	Time (min)	Pct A	Pct B
<b>Profile:</b>	<b>1</b>	0	25	75

**Flow Rate:** 2.5 mL/min

**Col. Temp.:** 35 °C

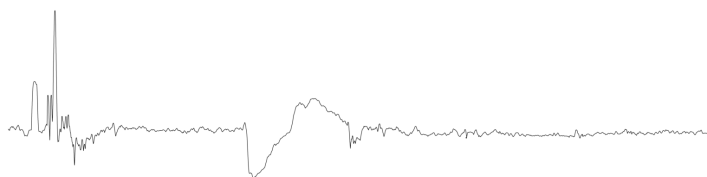
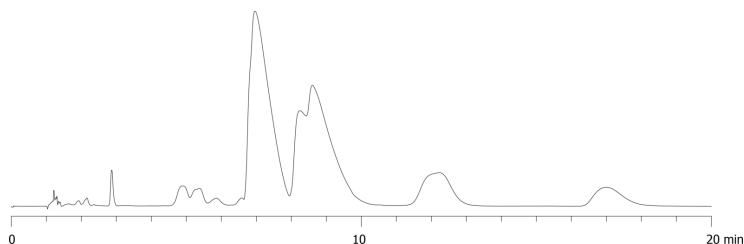
**Detection:** UV-Vis Abs.-Variable Wave.(UV) @ 220 nm (ambient)

**Analyst Note:** Application using combination of UV-Vis detector (upper trace) and PDR-Chiral Advanced Laser Polarimeter (lower trace) courtesy of PLR-Chiral, Inc.  
1.5mg in 50µL on-column injection of Terfenadine.

18866



Products used in this application:



### ANALYTES:

1 Terfenadine

2 Terfenadine

