

## Catecholamines on Kinetex 2.6 µm HILIC 100 Å, LC Column 50 x 4.6 mm Agilent 1200

**Column:** Kinetex® 2.6 µm HILIC 100 Å, LC Column 50 x 4.6 mm, Ea

**Dimensions:** 50 x 4.6 mm ID

**Order No:** 00B-4461-E0

**Elution Type:** Isocratic

**Eluent A:** 90/10 ACN/100mM NH<sub>4</sub> formate pH 3.2

Gradient	Step No.	Time (min)	Pct A
<b>Profile:</b>	<b>1</b>	0	100

**Flow Rate:** 2 mL/min

**Col. Temp.:** 25 °C

**Detection:** UV-Vis Abs.-Diode Array (PDA) @ 270 nm (25 °C)

**Analyst Note:** SecurityGuard™ ULTRA Guard Cartridge System extends column lifetime.

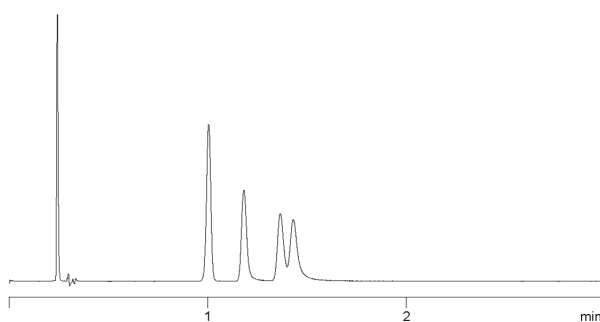
- SecurityGuard ULTRA Cartridges, UHPLC HILIC for 4.6mm ID Columns, 3/Pk Part No.: AJ0-8772

- Holder Part No.: AJ0-9000

18890



Products used in this application:



### ANALYTES:

**1** Serotonin

Retention Time: 1 min

**2** Dopamine

Retention Time: 1.18 min

**3** Epinephrine

Retention Time: 1.37 min

**4** Norepinephrine

Retention Time: 1.43 min

