

HPLC Application

ID No.: 18931

Medium MW Proteins on BioSep-SEC-S3000(2)

Column: BioSep™ 5 µm SEC-s3000 400 Å, LC Column 300 x 7.8 mm, Ea

Dimensions: 300 x 7.8 mm ID

Order No: 00H-2146-K0

Elution Type: Isocratic

Eluent A: 50mM Sodium Phosphate, 300mM NaCl, pH 6.8

Gradient	Step No.	Time (min)	Pct A
Profile:	1	0	100

Flow Rate: 1 mL/min

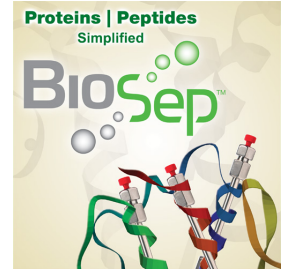
Col. Temp.: ambient

Detection: UV-Vis Abs.-Variable Wave.(UV) @ 214 nm (ambient)

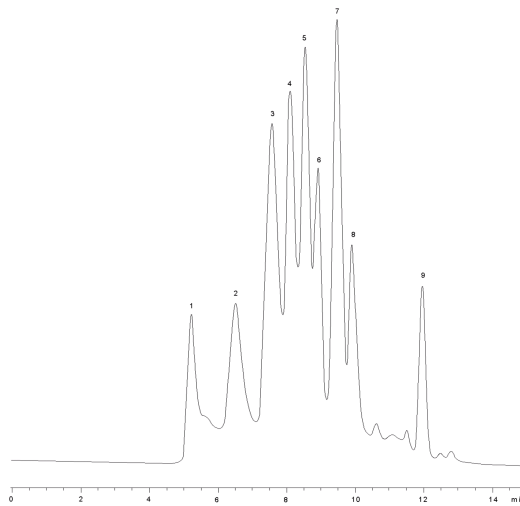
Analyst Note: SecurityGuard™ Guard Cartridge System extends column lifetime.

- SecurityGuard Cartridges, GFC 3000 4 x 3.0mm ID, 10/Pk Part No.: AJ0-4488
- Holder Part No.: KJ0-4282

18931



Products used in this application:



ANALYTES:

- 1 High MW impurity
- 2 Thyroglobulin (669kDa)
- 3 IgA (300kDa)
- 4 beta-Amylase (200kDa)
- 5 IgG (150kDa)
- 6 Transferrin (80kDa)
- 7 Ovalbumin (44kDa)
- 8 beta-Lactoglobulin A (35kDa)
- 9 Uridine (244Da)

