

# HPLC Application

ID No.: 18979

## Propranolol on Lux 5 µm Cellulose-1 by Chiral SFC with MeOH dissolution solvent

**Column:** Lux<sup>®</sup> 5 µm Cellulose-1, LC Column 250 x 4.6 mm, Ea

**Dimensions:** 250 x 4.6 mm ID

**Order No:** 00G-4459-E0

**Elution Type:** Isocratic

**Eluent A:** Methanol with 0.1% DEA

**Eluent B:** Carbon Dioxide

Gradient Profile:	Step No.	Time (min)	Pct A	Pct B
	1	0	25	75

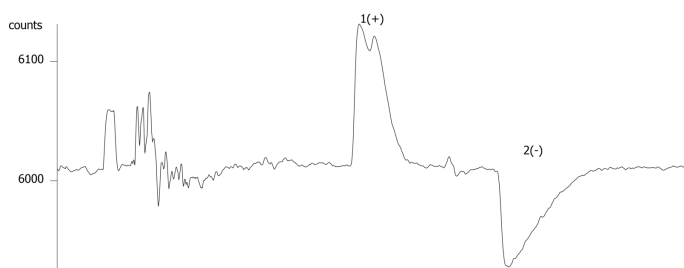
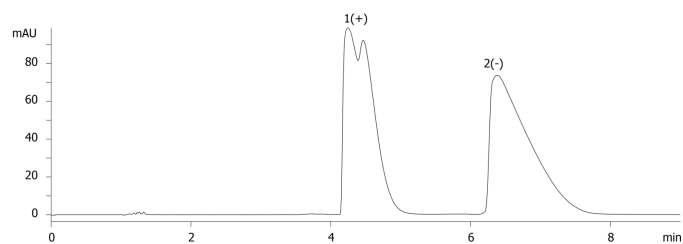
**Flow Rate:** 2.5 mL/min

**Col. Temp.:** 35 °C

**Detection:** Laser Polarimeter @ 220 nm (ambient)

**Analyst Note:** Sample was dissolved in Methanol.

18979



### ANALYTES:

- 1 Propranolol
- 2 Propranolol



Products used in this application:

