

Glibenclamide Related Substance HPLC Analysis (HP-EUR) on Kinetex 2.6µ C18 50 x 4.6mm ID @ 1.2ml/min

Column: Kinetex® 2.6 µm C18 100 Å, LC Column 50 x 4.6 mm, Ea

Dimensions: 50 x 4.6 mm ID

Order No: 00B-4462-E0

Elution Type: Gradient

Eluent A: 20:50:930 101.8g/L Triethylamine solution/ACN/H2O

Eluent B: 20:65:915 mobile phase A/H2O/ACN

| Gradient Profile: | Step No. | Time (min) | Pct A | Pct B |
|-------------------|----------|------------|-------|-------|
| | 1 | 0 | 45 | 55 |
| | 2 | 15 | 45 | 55 |
| | 3 | 30 | 5 | 95 |
| | 4 | 40 | 5 | 95 |
| | 5 | 41 | 45 | 55 |
| | 6 | 55 | 45 | 55 |

Flow Rate: 1.2 mL/min

Col. Temp.: 35 °C

Detection: UV-Vis Abs.-Variable Wave.(UV) @ 230 nm (ambient)

Analyst Note: SecurityGuard™ ULTRA Guard Cartridge System extends column lifetime.

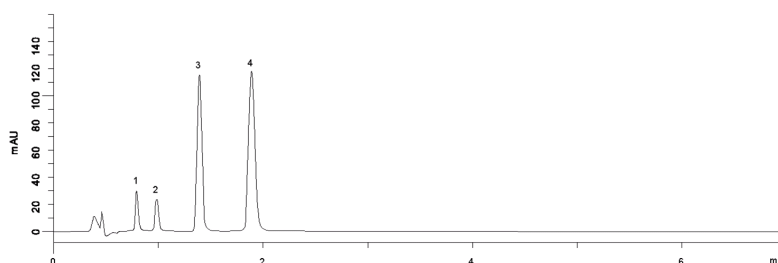
- SecurityGuard ULTRA Cartridges, UHPLC C18 for 4.6mm ID Columns, 3/Pk Part No.: AJ0-8768

- Holder Part No.: AJ0-9000

19021



Products used in this application:



ANALYTES:

- 1 Glibenclamide impurity A
Retention Time: 0.793 min
- 2 Glibenclamide impurity B
Retention Time: 0.982 min
- 3 Glibenclamide
Retention Time: 1.39 min
- 4 Gliclazide
Retention Time: 1.891 min

