

## Compare BioSep-SEC-S3000(2) & Sepax SRT SEC-300 Mid MW

**Column:** BioSep<sup>™</sup> 5  $\mu$ m SEC-s3000 400 Å, LC Column 300 x 7.8 mm, Ea

**Dimensions:** 300 x 7.8 mm ID

**Order No:** 00H-2146-K0

**Elution Type:** Isocratic

**Eluent A:** 100mM Sodium Phosphate, 300mM NaCl, pH 7.0

Gradient	Step No.	Time (min)	Pct A
<b>Profile:</b>	<b>1</b>	0	100

**Flow Rate:** 1 mL/min

**Col. Temp.:** ambient

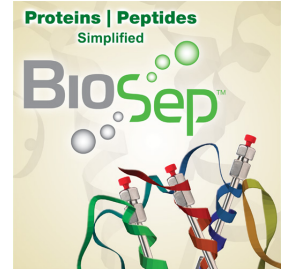
**Detection:** UV-Vis Abs.-Variable Wave.(UV) @ 280 nm (ambient)

**Analyst Note:** SecurityGuard<sup>™</sup> Guard Cartridge System extends column lifetime.

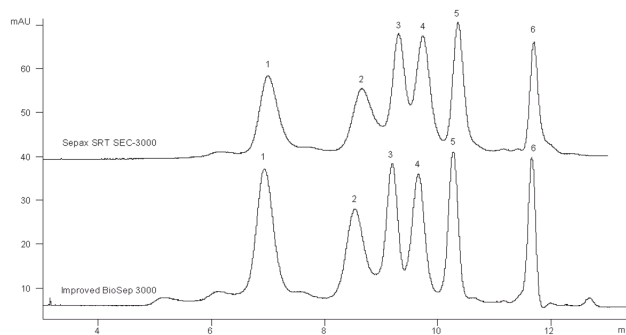
- SecurityGuard Cartridges, GFC 3000 4 x 3.0mm ID, 10/Pk Part No.: AJ0-4488

- Holder Part No.: KJ0-4282

19081



Products used in this application:



### ANALYTES:

- 1 Thyroglobulin (669kDa)
- 2 IgG (150kDa)
- 3 BSA (66kDa)
- 4 Ovalbumin (44kDa)
- 5 Myoglobin (17kDa)
- 6 Uridine (244Da)

