

Compare BioSep-SEC-S2000(2) & Sepax SRT SEC-150 Mid MW

Column: BioSep[™] 5 μ m SEC-s2000 145 \AA , LC Column 300 x 7.8 mm, Ea

Dimensions: 300 x 7.8 mm ID

Order No: 00H-2145-K0

Elution Type: Isocratic

Eluent A: 100mM Sodium Phosphate, 300mM NaCl, pH 7.0

| Gradient Profile: | Step No. | Time (min) | Pct A |
|-------------------|----------|------------|-------|
| | 1 | 0 | 100 |

Flow Rate: 1 mL/min

Col. Temp.: ambient

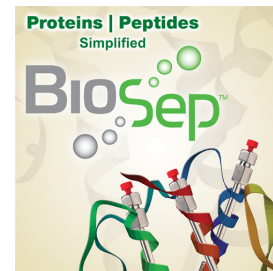
Detection: UV-Vis Abs.-Variable Wave.(UV) @ 280 nm (ambient)

Analyst Note: SecurityGuard[™] Guard Cartridge System extends column lifetime.

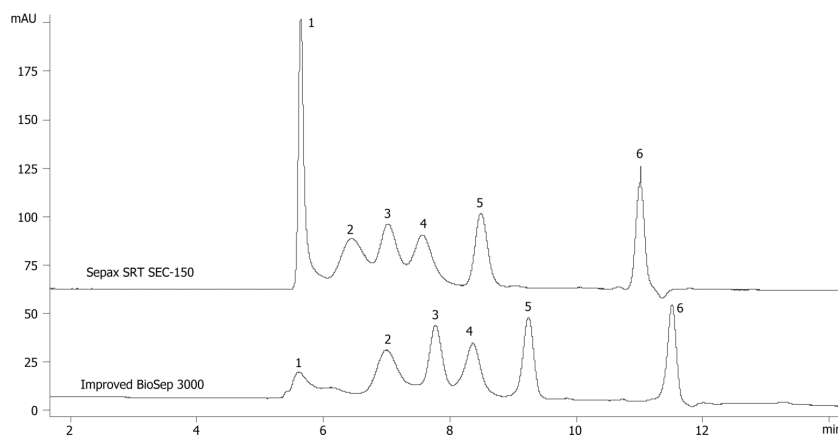
- SecurityGuard Cartridges, GFC-2000 4 x 3.0mm ID, 10/Pk Part No.: AJ0-4487

- Holder Part No.: KJ0-4282

19085



Products used in this application:



ANALYTES:

- 1 Thyroglobulin (669kDa)
- 2 IgG (150kDa)
- 3 BSA (66kDa)
- 4 Ovalbumin (44kDa)
- 5 Myoglobin (17kDa)
- 6 Uridine (244Da)

