

# HPLC Application

ID No.: 19100

## Atenolol on Lux 5 µm Cellulose-1 by Chiral SFC

**Column:** Lux<sup>®</sup> 5 µm Cellulose-1, LC Column 250 x 4.6 mm, Ea

**Dimensions:** 250 x 4.6 mm ID

**Order No:** 00G-4459-E0

**Elution Type:** Isocratic

**Eluent A:** Methanol with 0.1% DEA

**Eluent B:** CO<sub>2</sub>

Gradient Profile:	Step No.	Time (min)	Pct A	Pct B
	1	0	20	80

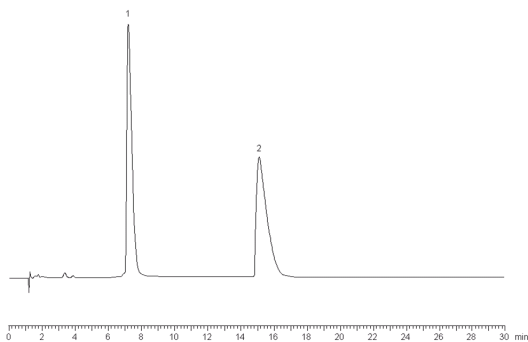
**Flow Rate:** 2.5 mL/min

**Col. Temp.:** 35 °C

**Detection:** UV-Vis Abs.-Diode Array (PDA) @ 220 nm (35 °C)

**Analyst Note:** Application using Jasco SFC instrument courtesy of Cephalon, Inc. (cf. AppID 19098)

19100



Products used in this application:



### ANALYTES:

- 1 Atenolol
- 2 Atenolol