

Comparison of Cellulose 1, 2 and Amylose 2 Selectivity with IPA

Column: N/A

Dimensions: N/A

Order No: N/A

Elution Type: N/A

Eluent A: Isopropyl Alcohol with 0.1% DEA

Eluent B: Carbon Dioxide

Gradient Profile:	Step No.	Time (min)	Pct A	Pct B
	1	0	20	80

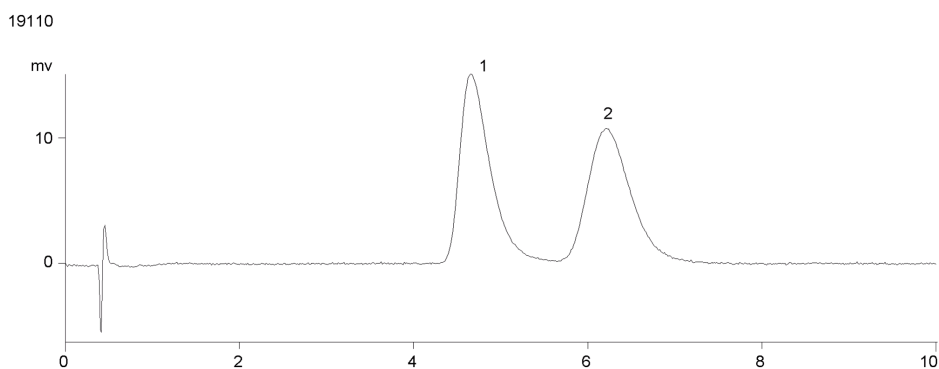
Flow Rate: 2.5 mL/min

Col. Temp.: 35 °C

Detection: UV-Vis Abs.-Fixed Wave. (UV) @ 254 nm (35 °C)

Detector Info: PDA

Analyst Note: SecurityGuard™ Guard Cartridge System extends column lifetime.
- SecurityGuard Cartridges, Silica 4 x 3.0mm, 10/Pk Part No.: AJ0-4348
- Holder Part No.: KJ0-4282



ANALYTES:

1 Propafenone

