

# HPLC Application

ID No.: 19161

## USP 621: Allowable changes in particle size- 10um

**Column:** Luna® 10 µm C18(2) 100 Å, LC Column 150 x 4.6 mm, Ea

**Dimensions:** 150 x 4.6 mm ID

**Order No:** 00F-4253-E0

**Elution Type:** Isocratic

**Eluent A:** Water

**Eluent B:** Methanol

**Eluent C:** 15mM Sodium Perchlorate and 15mM TEA

Gradient Profile:	Step No.	Time (min)	Pct A	Pct B	Pct C
	1	0	35	65	0

**Flow Rate:** 1 mL/min

**Col. Temp.:** ambient

**Detection:** UV-Vis Abs.-Variable Wave.(UV) @ nm (ambient)

**Analyst Note:** SecurityGuard™ Guard Cartridge System extends column lifetime.

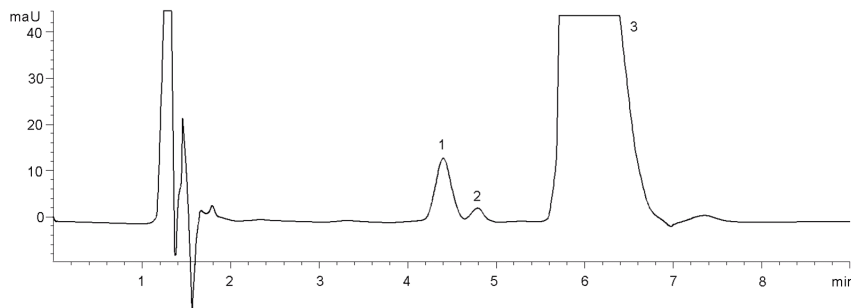
- SecurityGuard Cartridges, C18 4 x 3.0mm ID, 10/Pk Part No.: AJ0-4287

- Holder Part No.: KJ0-4282

19161



Products used in this application:



### ANALYTES:

- 1 excipient (1)
- 2 drug
- 3 excipient 2

