

HPLC Application

ID No.: 19162

USP 621: Allowable changes in particle size- 5um

Column: Luna® 5 µm C18(2) 100 Å, LC Column 150 x 4.6 mm, Ea

Dimensions: 150 x 4.6 mm ID

Order No: 00F-4252-E0

Elution Type: Isocratic

Eluent A: Water

Eluent B: Methanol

Eluent C: 15mM Sodium Perchlorate and 15mM TEA

| Gradient Profile: | Step No. | Time (min) | Pct A | Pct B | Pct C |
|-------------------|----------|------------|-------|-------|-------|
| | 1 | 0 | 35 | 65 | 0 |

Flow Rate: 1

Col. Temp.: ambient

Detection: UV-Vis Abs.-Variable Wave.(UV) @ nm (ambient)

Analyst Note: SecurityGuard™ Guard Cartridge System extends column lifetime.

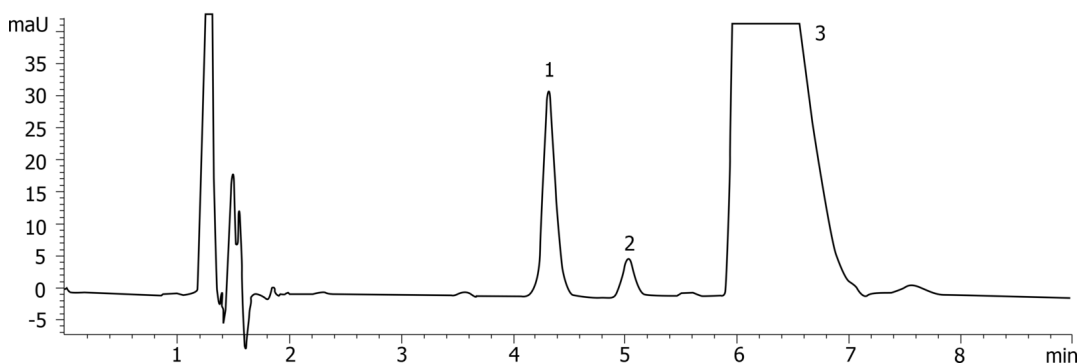
- SecurityGuard Cartridges, C18 4 x 3.0mm ID, 10/Pk Part No.: AJ0-4287

- Holder Part No.: KJ0-4282

19162



Products used in this application:



ANALYTES:

- 1 excipient (1)
- 2 drug
- 3 excipient 2

