

# UHPLC Application

ID No.: 19167

## Pain Panel with and without sample focusing on Kinetex C18 2.6µm 50 x 2.1 mm by LC/MS

**Column:** Kinetex<sup>®</sup> 2.6 µm C18 100 Å, LC Column 50 x 2.1 mm, Ea

**Dimensions:** 50 x 2.1 mm ID

**Order No:** 00B-4462-AN

**Elution Type:** Gradient

**Eluent A:** 0.1% Formic acid in H<sub>2</sub>O

**Eluent B:** 0.1% Formic acid ACN

Gradient Profile:	Step No.	Time (min)	Pct A	Pct B
	1	0	95	5
	2	0.5	95	5
	3	2.5	5	95
	4	3.5	5	95
	5	3.51	95	5
	6	5.3	95	5

**Flow Rate:** 450 µL/min

**Col. Temp.:** 25 °C

**Detection:** Mass Spectrometer (MS) @ amu (ambient)

**Analyst Note:** ESI conditions

Positive mode

NEB: 10.00

CUR: 9.00

IS: 4500.00

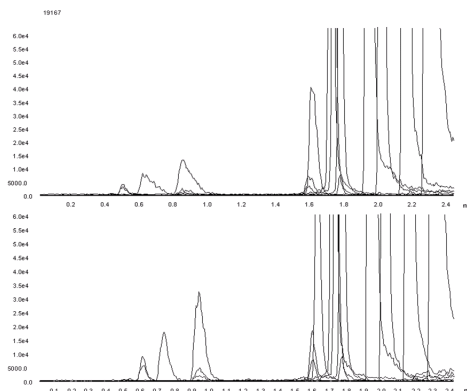
TEM: 450.00

CAD: 11.00

EP: 10.00



Products used in this application:



## Pain Panel with and without sample focusing on Kinetex C18 2.6 $\mu$ m 50 x 2.1 mm by LC/MS

### ANALYTES:

- 1** Morphine (MRM: 286.2>152.2)
- 2** Oxymorphone (MRM: 302.3>227.1)
- 3** Hydromorphone (MRM: 286.2>185.2)
- 4** Codeine (MRM: 300.4>152.0)
- 5** Naloxone (MRM: 328.3>310.4)
- 6** Oxycodone (MRM: 316.4>298.5)
- 7** Naltrexone (MRM: 342.3>324.5)
- 8** Hydrocodone (MRM: 300.4>199.1)
- 9** Tramadol (MRM: 264.3>58.2)
- 10** Meperidine (Demerol) MRM 248.3>220.4
- 11** Fentanyl (MRM: 337.3>188.4)
- 12** Buprenorphine (MRM: 468.4>396.1)
- 13** Methadone (MRM: 310.2>265.3)

