

HPLC Application

ID No.: 19201

Orphenadrine on Lux 5µm Cellulose-1 in NP

Column: Lux[®] 5 µm Cellulose-1, LC Column 250 x 4.6 mm, Ea

Dimensions: 250 x 4.6 mm ID

Order No: 00G-4459-E0

Elution Type: Isocratic

Eluent A: Hexane / EtOH (85:15) DEA (0.1%)

Gradient	Step No.	Time (min)	Pct A
Profile:	1	0	100

Flow Rate: 1 mL/min

Col. Temp.: ambient

Detection: UV-Vis Abs.-Variable Wave.(UV) @ 220 nm (ambient)

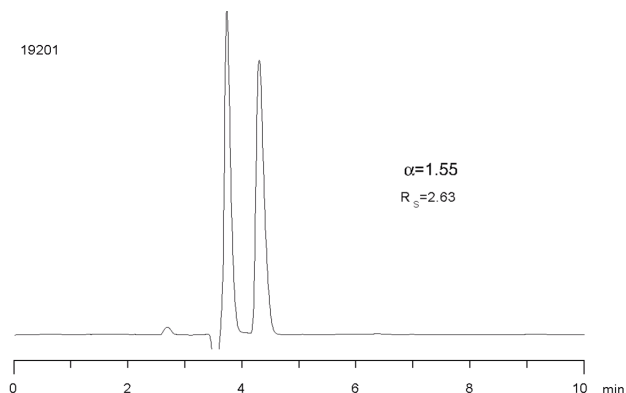
Analyst Note: SecurityGuard[™] Guard Cartridge System extends column lifetime.

- SecurityGuard Cartridges, Lux Cellulose-1, 4 x 3.0mm ID, 10/Pk Part No.: AJ0-8403

- Holder Part No.: KJ0-4282



Products used in this application:



ANALYTES:

- 1** Orphenadrine
Retention Time: 3.731 min
- 2** Orphenadrine
Retention Time: 4.299 min

