

# GC Application

ID No.: 19249

## PolyWAX 655 on ZB-1XT SimDist 5x0.53x0.09

**Column:** Zebron<sup>™</sup> ZB-1XT SimDist Metal, GC Cap. Column 5 m x 0.53 mm x 0.09 µm, Ea

**Phase:** 100% Dimethylpolysiloxane

**Dimensions:** 5 meters x 0.53 mm x 0.09 µm

**Order No:** 7AK-G026-55

**Oven Profile:** 50 °C to 430 °C @ 10 °C/min for 20 min.

**Carrier Gas:** Constant Flow Helium, 29 mL/min

**Injection:** On-Column :1 1 µL @ 53°C

**Detection:** Flame Ionization (FID) (450°C)

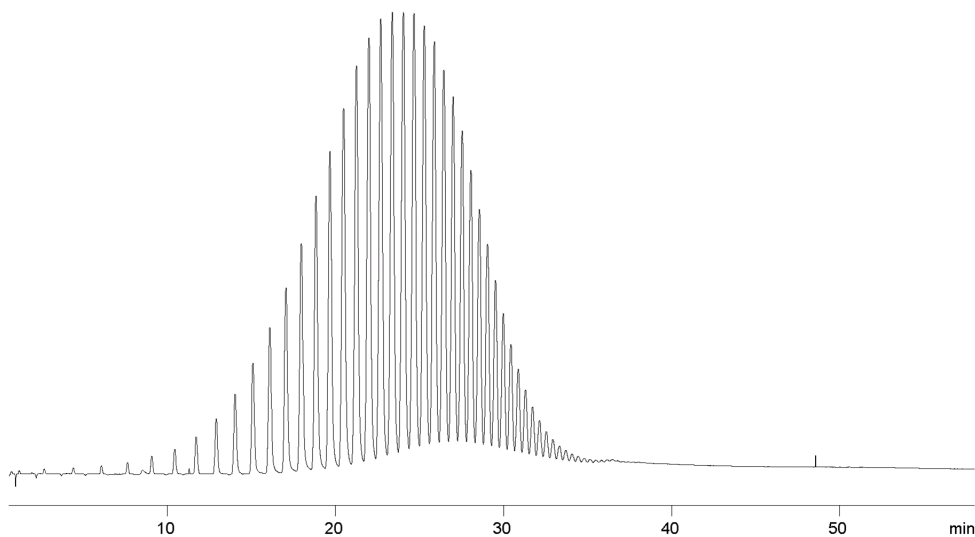
**Analyst Note:** This chromatogram has been baseline subtracted. Sample was 1mg/mL in Carbon Disulfide.



Products used in this application:



19249



### ANALYTES:

- 1 PolyWAX 655

