

Simvastatin by HPLC - Kinetex 2.6um XB-C18 50x4.6mm

Column: Kinetex® 2.6 µm XB-C18 100 Å, LC Column 50 x 4.6 mm, Ea

Dimensions: 50 x 4.6 mm ID

Order No: 00B-4496-E0

Elution Type: Isocratic

Eluent A: 65:35 ACN: 28mM Monobasic Sodium phosphate pH 4.5

Gradient	Step No.	Time (min)	Pct A
Profile:	1	15	100

Flow Rate: 1.5 mL/min

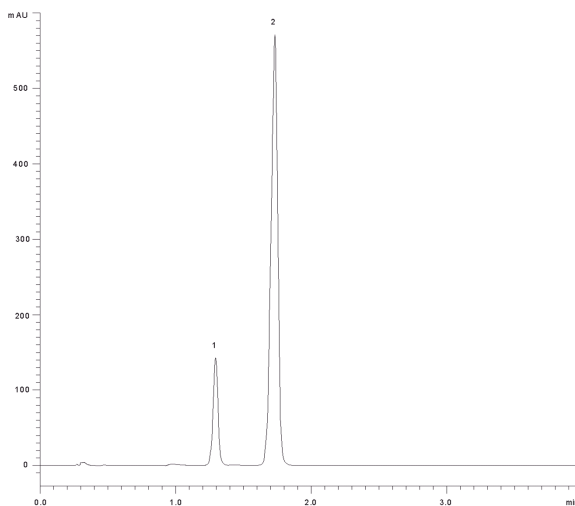
Col. Temp.: 45 °C

Detection: UV-Vis Abs.-Diode Array (PDA) @ 238 nm (ambient)

Analyst Note: For USP's system suitability requirements, the capacity factor for simvastatin must not be less than 3.0; column efficiency not less than 4500 theoretical plates; tailing factor not more than 2.0; resolution, while not specified according to USP standards, should be adequate at no less than



Products used in this application:



ANALYTES:

1 Lovastatin

Retention Time: 1.296 min

2 Simvastatin

Retention Time: 1.731 min

