

## Simvastatin by HPLC - Kinetex 2.6um C8 50x4.6mm

**Column:** Kinetex® 2.6 µm C8 100 Å, LC Column 50 x 4.6 mm, Ea

**Dimensions:** 50 x 4.6 mm ID

**Order No:** 00B-4497-E0

**Elution Type:** Isocratic

**Eluent A:** 65:35 ACN: 28mM Monobasic Sodium phosphate pH 4.5

Gradient	Step No.	Time (min)	Pct A
<b>Profile:</b>	<b>1</b>	15	100

**Flow Rate:** 1.5 mL/min

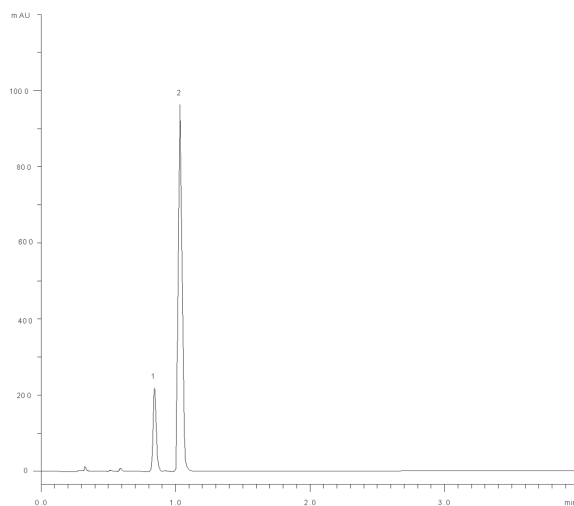
**Col. Temp.:** 45 °C

**Detection:** UV-Vis Abs.-Diode Array (PDA) @ 238 nm (ambient)

**Analyst Note:** For USP's system suitability requirements, the capacity factor for simvastatin must not be less than 3.0; column efficiency not less than 4500 theoretical plates; tailing factor not more than 2.0; resolution, while not specified according to USP standards, should be adequate at no less than



**Products used in this application:**



### ANALYTES:

**1** Lovastatin

Retention Time: 0.844 min

**2** Simvastatin

Retention Time: 1.036 min