

# HPLC Application

ID No.: 19698

## Methadone on Lux Cellulose-4 Normal Phase

**Column:** Lux<sup>®</sup> 5  $\mu$ m Cellulose-4, LC Column 150 x 4.6 mm, Ea

**Dimensions:** 150 x 4.6 mm ID

**Order No:** 00F-4491-E0

**Elution Type:** Isocratic

**Eluent A:** Hexane + 0.1%DEA

**Eluent B:** Isopropanol + 0.1% DEA

Gradient Profile:	Step No.	Time (min)	Pct A	Pct B
	1	0	98	2

**Flow Rate:** 1.5 mL/min

**Col. Temp.:** ambient

**Detection:** UV-Vis Abs.-Diode Array (PDA) @ 254 nm (ambient)

**Analyst Note:** Resolution = 1.89

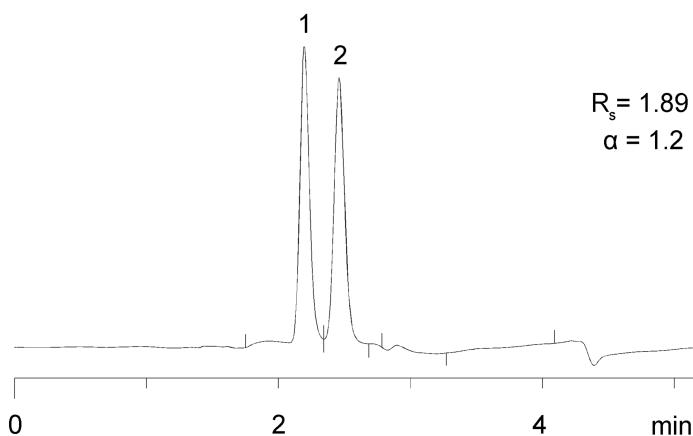
Selectivity = 1.12



Products used in this application:



App ID 19698



### ANALYTES:

**1** Methadone (enantiomer 1)

Retention Time: 2.2 min

**2** Methadone (enantiomer 2)

Retention Time: 2.5 min

