

LC/MS/MS Analysis of Propoxyphene from urine using Strata-X-Drug B on a Kinetex C18 2.6µm, 50x2.1mm

Column: Kinetex® 2.6 µm C18 100 Å, LC Column 50 x 2.1 mm, Ea

Dimensions: 50 x 2.1 mm ID

Order No: 00B-4462-AN

Elution Type: Gradient

Eluent A: 0.1% Formic acid

Eluent B: 0.1% Formic acid in acetonitrile

Gradient Profile:	Step No.	Time (min)	Pct A	Pct B
	1	0	60	40
	2	3.5	0	100
	3	3.51	60	40
	4	6.5	60	40

Flow Rate: 400 µL/min

Col. Temp.: ambient

Detection: Mass Spectrometer (MS) @ amu (ambient)

Detector Info: <a target="_blank"

href="https://sciex.com/products/mass-spectrometers?utm_campaign=2019%20application%20search&utm_source=phenomenex&utm_medium=referral">SCIEX<

Source: Cur-11, CAD-12, IS-4500, Tem-450, NEB-12

Dwell: 25ms

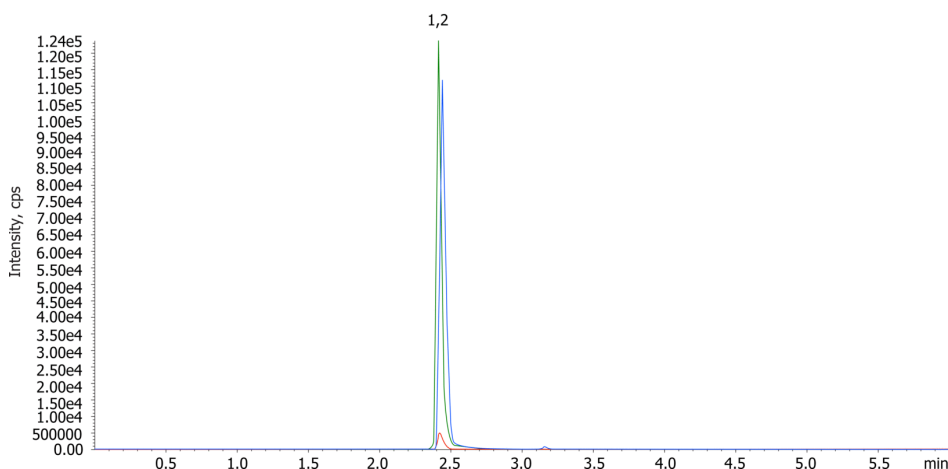
Polarity: Positive

Analyst Note: SecurityGuard™ ULTRA Guard Cartridge System extends column lifetime.

- SecurityGuard ULTRA Cartridges, UHPLC C18 for 2.1mm ID Columns, 3/Pk Part No.: AJ0-8782

- Holder Part No.: AJ0-9000

19704



ANALYTES:

1 Propoxyphene-d11 (351>64.2)

Retention Time: 2.45 min

2 Propoxyphene (340.2>58.1, 340.2>143.1)

Retention Time: 2.45 min



Products used in this application:



Sample Preparation Details

for UHPLC Application ID No.: 19704



LC/MS/MS Analysis of Propoxyphene from urine using Strata-X-Drug B on a Kinetex C18 2.6µm, 50x2.1mm

PRODUCT DESCRIPTION:

Strata™-X-Drug B 33 µm Polymeric Strong Cation, 60 mg / 6 mL, Tubes , 30/Pk

Order No.: 8B-S128-UCH

SOLID PHASE EXTRACTION (SPE) PROCEDURE:

Note: The solvent volumes shown below are for a 60 mg bed mass.

The solvent volumes will need to be adjusted for a smaller or larger bed mass.

Condition:

Load:

To 2mL urine, add 2mLs of 100mM sodium acetate buffer with I.S. (300ng/mL). Make sure pH should be ~4.0-6.0. Load pre-treated sample directly onto SPE cartridge. NO CONDITIONING REQUIRED

Wash:

Dry:

10 minutes @ full vacuum

Elute:

Final Prep and Analysis:

Evaporate to dryness under a stream of nitrogen at 50 C . Reconstitute in 1 mL of 40% acetonitrile.

Inject: 2.5 µL on HPLC Mass Spectrometer (MS) @ amu (ambient)

ANALYTES:	Spiked Conc. (ng/mL)	Log P	pKa	% Rec	%RSC (n=0)
1 Propoxyphene-d11	300			100	0.001
2 Propoxyphene	300			99.21	1.95

Note: This method is designed as a convenient starting point for further investigation and can be tailored to meet your extraction goals. Call your local Phenomenex Representative for assistance in method development and optimization techniques.

©2021 Phenomenex Inc. All rights reserved.

For more information contact your Phenomenex Representative at info@phenomenex.com



Phenomenex products are available worldwide.

www.phenomenex.com

info@phenomenex.com