

HPLC Application

ID No.: 19716

Rabeprazole on Lux Cellulose 4

Column: Lux[®] 5 µm Cellulose-4, LC Column 250 x 4.6 mm, Ea

Dimensions: 250 x 4.6 mm ID

Order No: 00G-4491-E0

Elution Type: Isocratic

Eluent A: 10mM Ammonium Bicarbonate +0.1%DEA

Eluent B: Methanol +0.1% DEA

Gradient Profile:	Step No.	Time (min)	Pct A	Pct B
	1	0	10	90

Flow Rate: 1.5 mL/min

Col. Temp.: ambient

Detection: UV-Vis Abs.-Variable Wave.(UV) @ 286 nm (ambient)

Analyst Note: SecurityGuard[™] Guard Cartridge System extends column lifetime.

- SecurityGuard Cartridges, Lux Cellulose-4 4 x 3.0 mm, 10/Pk Part No.: AJ0-8627

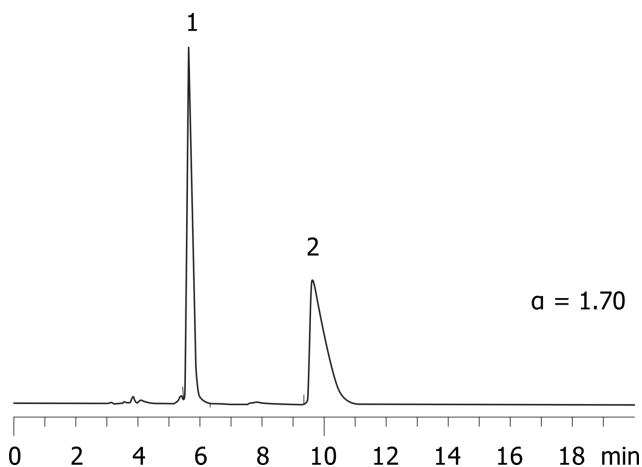
- Holder Part No.: KJ0-4282



Products used in this application:



19716



ANALYTES:

1 Rabeprazole (enantiomer 1)

Retention Time: 5.66 min

2 Rabeprazole (enantiomer 2)

Retention Time: 9.64 min

