

EtG and EtS in Urine by LC/MS/MS Using Synergi Hydro-RP 2.5 um Column

Column: Synergi™ 2.5 µm Hydro-RP 100 Å, LC Column 100 x 3 mm, Ea

Dimensions: 100 x 3 mm ID

Order No: 00D-4387-Y0

Elution Type: Gradient

Eluent A: 10 mM Ammonium acetate

Eluent B: 50:50 Methanol:Acetonitrile

Gradient Profile:	Step No.	Time (min)	Pct A	Pct B
	1	0	100	0
	2	4	20	80
	3	4.1	100	0
	4	7	100	0



Flow Rate: 500 µL/min

Col. Temp.: 25 °C

Detection: Mass Spectrometer (MS) @ amu (ambient)

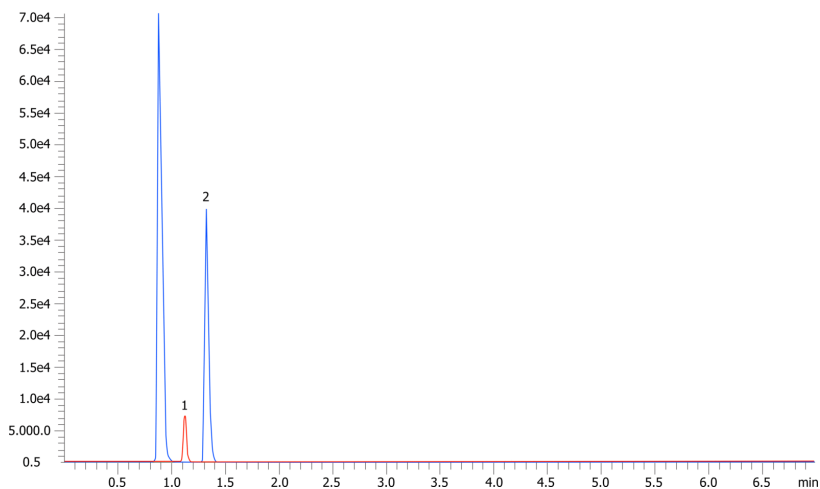
Detector Info: <a target="_blank"

Analyst Note: href="https://sciex.com/products/mass-spectrometers?utm_campaign=2019%20application%20search&utm_source=phenomenex&utm_medium=referral">SCIEX
SecurityGuard™ ULTRA Guard Cartridge System extends column lifetime.

- SecurityGuard ULTRA Cartridges, UHPLC C18 for 3.0mm ID Columns, 3/Pk Part No.: AJ0-8775

- Holder Part No.: AJ0-9000

19735



ANALYTES:

1 EtG (Ethyl glucuronide) (221.2 > 75.0)

Retention Time: 1.1 min

2 EtS (Ethyl sulfate) (124.9 > 80.1)

Retention Time: 1.3 min

