

# HPLC Application

ID No.: 20361

## Zopiclone on Lux 5µm Cellulose-3 in PO

**Column:** Lux<sup>®</sup> 5 µm Cellulose-3, LC Column 250 x 4.6 mm, Ea

**Dimensions:** 250 x 4.6 mm ID

**Order No:** 00G-4493-E0

**Elution Type:** Isocratic

**Eluent A:** MeOH / IPA (90:10) DEA (0.1%)

| Gradient        | Step No. | Time (min) | Pct A |
|-----------------|----------|------------|-------|
| <b>Profile:</b> | <b>1</b> | 0          | 100   |

**Flow Rate:** 1 mL/min

**Col. Temp.:** ambient

**Detection:** UV-Vis Abs.-Variable Wave.(UV) @ 220 nm (ambient)

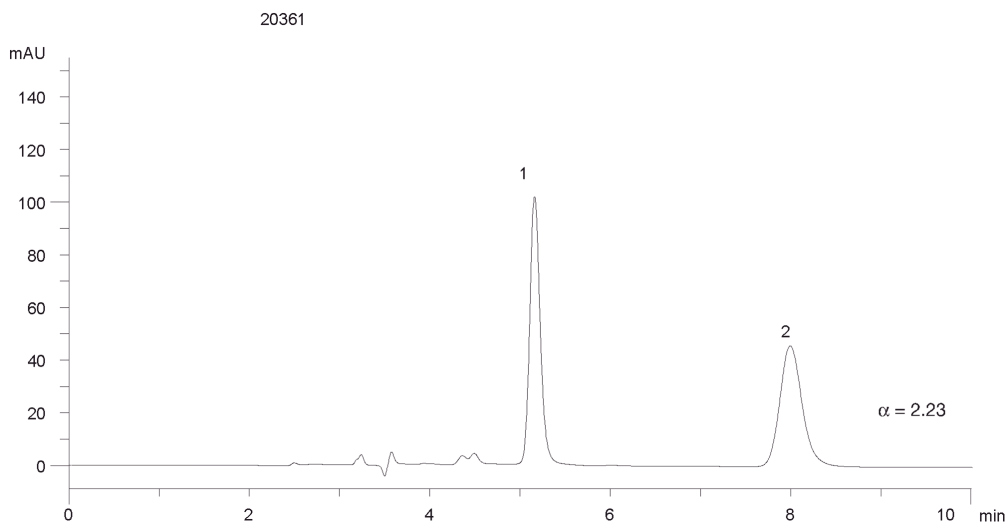
**Analyst Note:** SecurityGuard<sup>™</sup> Guard Cartridge System extends column lifetime.

- SecurityGuard Cartridges, Lux Cellulose-3 4 x 3.0 mm, 10/Pk Part No.: AJ0-8622

- Holder Part No.: KJ0-4282



Products used in this application:



### ANALYTES:

**1** Zopiclone

Retention Time: 5.15 min

**2** Zopiclone

Retention Time: 7.98 min

