

Cyclophosphamide hydrate on Lux 5µm Amylose-2 in NP

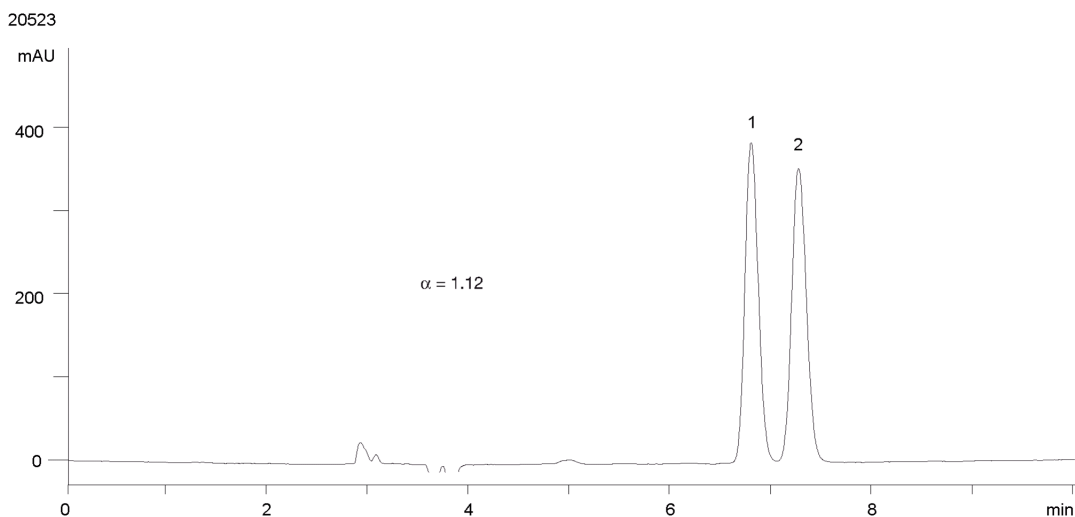
Column: N/A**Dimensions:** N/A**Order No:** N/A**Elution Type:** N/A**Eluent A:** Hexane / EtOH (80:20) DEA (0.1%)**Gradient**

| Profile: | Step No. | Time (min) | Pct A |
|----------|----------|------------|-------|
| | 1 | 0 | 100 |

Flow Rate: 1 mL/min**Col. Temp.:** ambient**Detection:** UV-Vis Abs.-Variable Wave.(UV) @ 220 nm (ambient)**Analyst Note:** SecurityGuard™ Guard Cartridge System extends column lifetime.

- SecurityGuard Cartridges, Lux Amylose-2, 4 x 3.0mm ID, 10/Pk Part No.: AJ0-8470

- Holder Part No.: KJ0-4282

**ANALYTES:****1** Cyclophosphamide hydrate

Retention Time: 6.81 min

2 Cyclophosphamide hydrate

Retention Time: 7.28 min

