

HPLC Application

ID No.: 20537

Methaqualone on Lux 5 μ m Cellulose-4 in NP

Column: Lux[®] 5 μ m Cellulose-4, LC Column 250 x 4.6 mm, Ea

Dimensions: 250 x 4.6 mm ID

Order No: 00G-4491-E0

Elution Type: Isocratic

Eluent A: Hexane / EtOH (80:20) DEA (0.1%)

| Gradient | Step No. | Time (min) | Pct A |
|-----------------|----------|------------|-------|
| Profile: | 1 | 0 | 100 |

Flow Rate: 1 mL/min

Col. Temp.: ambient

Detection: UV-Vis Abs.-Variable Wave.(UV) @ 220 nm (ambient)

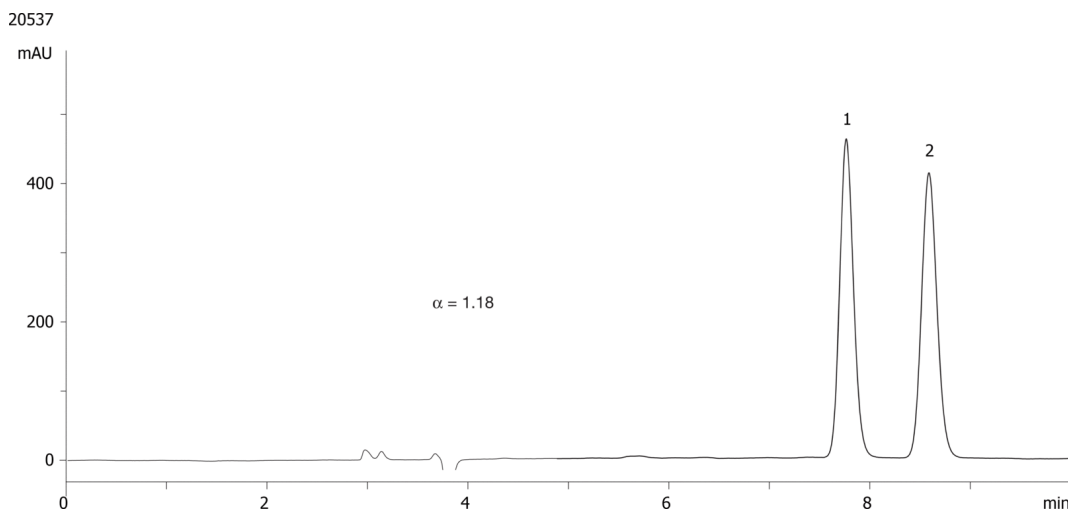
Analyst Note: SecurityGuard[™] Guard Cartridge System extends column lifetime.

- SecurityGuard Cartridges, Lux Cellulose-4 4 x 3.0 mm, 10/Pk Part No.: AJ0-8627

- Holder Part No.: KJ0-4282



Products used in this application:



ANALYTES:

1 Methaqualone

Retention Time: 7.76 min

2 Methaqualone

Retention Time: 8.59 min

