

Immunosuppressants by LCMS using Luna 5um Phenyl-Hexyl 50x2.1mm

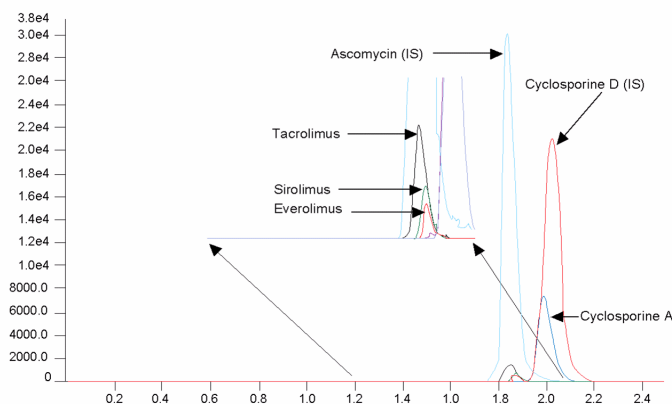
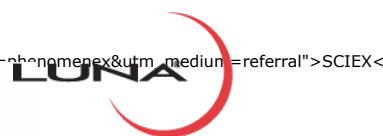
Column: Luna® 5 µm Phenyl-Hexyl 100 Å, LC Column 50 x 2 mm, Ea
Dimensions: 50 x 2 mm ID
Order No: 00B-4257-B0
Elution Type: Isocratic
Eluent A: 97% methanol + 0.3 mM ammonium acetate + 0.003% acetic acid
Gradient

Step No.	Time (min)	Pct A
1	0	100

Flow Rate: 0.5 mL/min
Col. Temp.: ambient
Detection: Tandem Mass Spec (MS-MS) @ (ambient)
Detector Info: SCIEEX



Products used in this application:



ANALYTES:

- 1 Everolimus
Retention Time: 1.87 min
- 2 Sirolimus
Retention Time: 1.86 min
- 3 Tacrolimus
Retention Time: 1.83 min
- 4 Ascomycin (internal standard)
Retention Time: 1.83 min
- 5 Cyclosporin D (internal standard)
Retention Time: 2.02 min

