

HPLC Application

ID No.: 20692

Pain Panel Opiates by LC/MS using Kinetex 2.6u C18 50x2.1mm

Column: Kinetex® 2.6 µm C18 100 Å, LC Column 50 x 2.1 mm, Ea

Dimensions: 50 x 2.1 mm ID

Order No: 00B-4462-AN

Elution Type: Gradient

Eluent A: 10mM ammonium formate

Eluent B: Methanol with 0.1% formic acid

Gradient Profile:	Step No.	Time (min)	Pct A	Pct B
	1	0	95	5
	2	3	5	95
	3	3.1	95	5
	4	5	95	5

Flow Rate: 500 µL/min

Col. Temp.: ambient

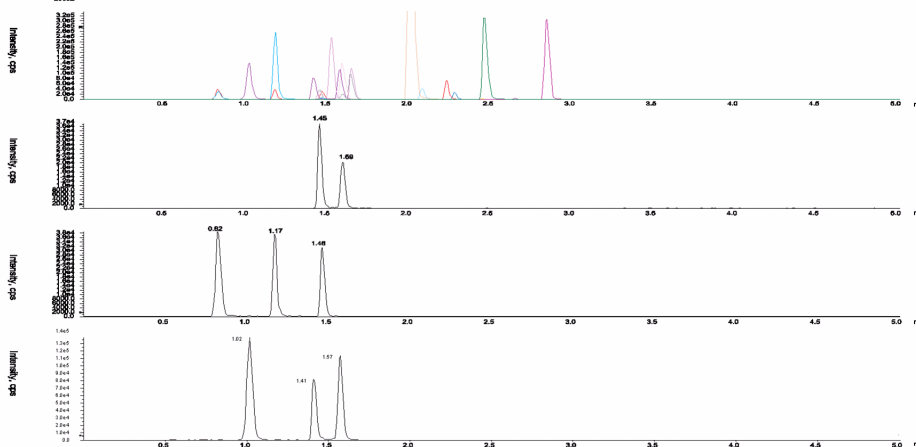
Detection: Tandem Mass Spec (MS-MS) @ (ambient)

Detector Info: <a target="_blank"

href="https://sciex.com/products/mass-spectrometers?utm_campaign=2019%20application%20search&utm_source=phenomenex&utm_medium=referral">SCIEX<



Products used in this application:



Pain Panel Opiates by LC/MS using Kinetex 2.6u C18 50x2.1mm

ANALYTES:

- 1** Morphine
- 2** Oxymorphone
- 3** Hydromorphone
- 4** Codeine
- 5** Norhydrocodone
- 6** Oxycodone
- 7** Noroxycodone
- 8** Hydrocodone
- 9** 6-MAM
- 10** Norfentanyl
- 11** Tramadol
- 12** Meperidine
- 13** Normeperidine
- 14** Norbuprenorphine
- 15** Fentanyl
- 16** Buprenorphine
- 17** Methadone

