

Gingerol Standards on Kinetex 5u C18 150x4.6mm

Column: Kinetex® 5µm C18 100 Å, LC Column 150 x 4.6 mm, Ea

Dimensions: 150 x 4.6 mm ID

Order No: 00F-4601-E0

Elution Type: Gradient

Eluent A: MilliQ Water

Eluent B: Acetonitrile

Gradient Profile:	Step No.	Time (min)	Pct A	Pct B
	1	0	70	30
	2	15	5	95
	3	16	5	95
	4	17	70	30
	5	20	70	30

Flow Rate: 1.5 mL/min

Col. Temp.: ambient

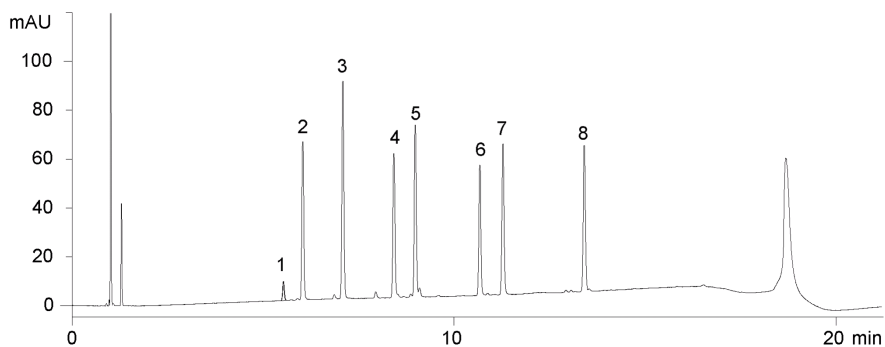
Detection: UV-Vis Abs.-Variable Wave.(UV) @ 205 nm (40 °C)



Products used in this application:



20772



ANALYTES:

- 1 6-Gingerol (isomer 1)
- 2 6-Gingerol (isomer 2)
- 3 Capsaicin
- 4 8-Gingerol
- 5 6-Shogaol
- 6 10-Gingerol
- 7 8-Shogaol
- 8 10-Shogaol

