

HPLC Application

ID No.: 20901

Quantification of Acrylamide in Food by LC/MS/MS

Column: Luna® 3 µm C18(2) 100 Å, LC Column 150 x 3 mm, Ea

Dimensions: 150 x 3 mm ID

Order No: 00F-4251-Y0

Elution Type: Gradient

Eluent A: Water with 0.001% Formic Acid

Eluent B: Methanol with 0.001% Formic Acid

Gradient Profile:	Step No.	Time (min)	Pct A	Pct B
	1	0	90	10
	2	10	100	0
	3	0	90	10

Flow Rate: 250 µL/min

Col. Temp.: 60 °C

Detection: Tandem Mass Spec (MS-MS) @ (ambient)

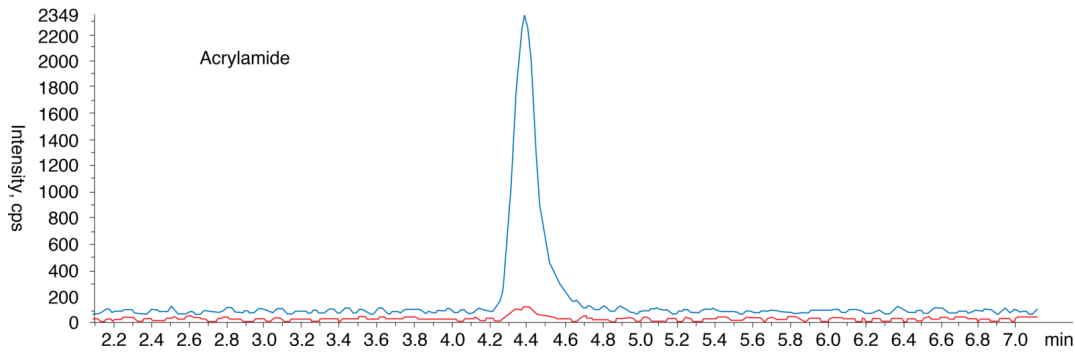
Detector Info: <a target="_blank"

20901

href="https://sciex.com/products/mass-spectrometers?utm_campaign=2019%20application%20search&utm_source=phenomenex&utm_medium=referral">SCIEX<



Products used in this application:



ANALYTES:

1 Acrylamide

Retention Time: 4.4 min

